

PRODUCT CATALOGUE

PROFESSIONAL MACHINERY FOR INDUSTRY



MTP & MATIX OFFER OF PROFESSIONAL MACHINERY FOR INDUSTRY

2017/2018

**We look forward
to cooperation with you!**





MTP S.A. and Matix have been present on the production of mining machinery market for 9 years. We have been cooperating closely for 6 years. We offer complex systems for the mining industry.



Our goal is to provide high quality and client satisfaction.

We specialize in the production and trade of underground mining, machinery repairs and launching innovative technical solutions.

Our future aim is to develop technical possibilities and production services.

We are taking part in Blue Ocean Strategy Programme in order to diversify our production offer.

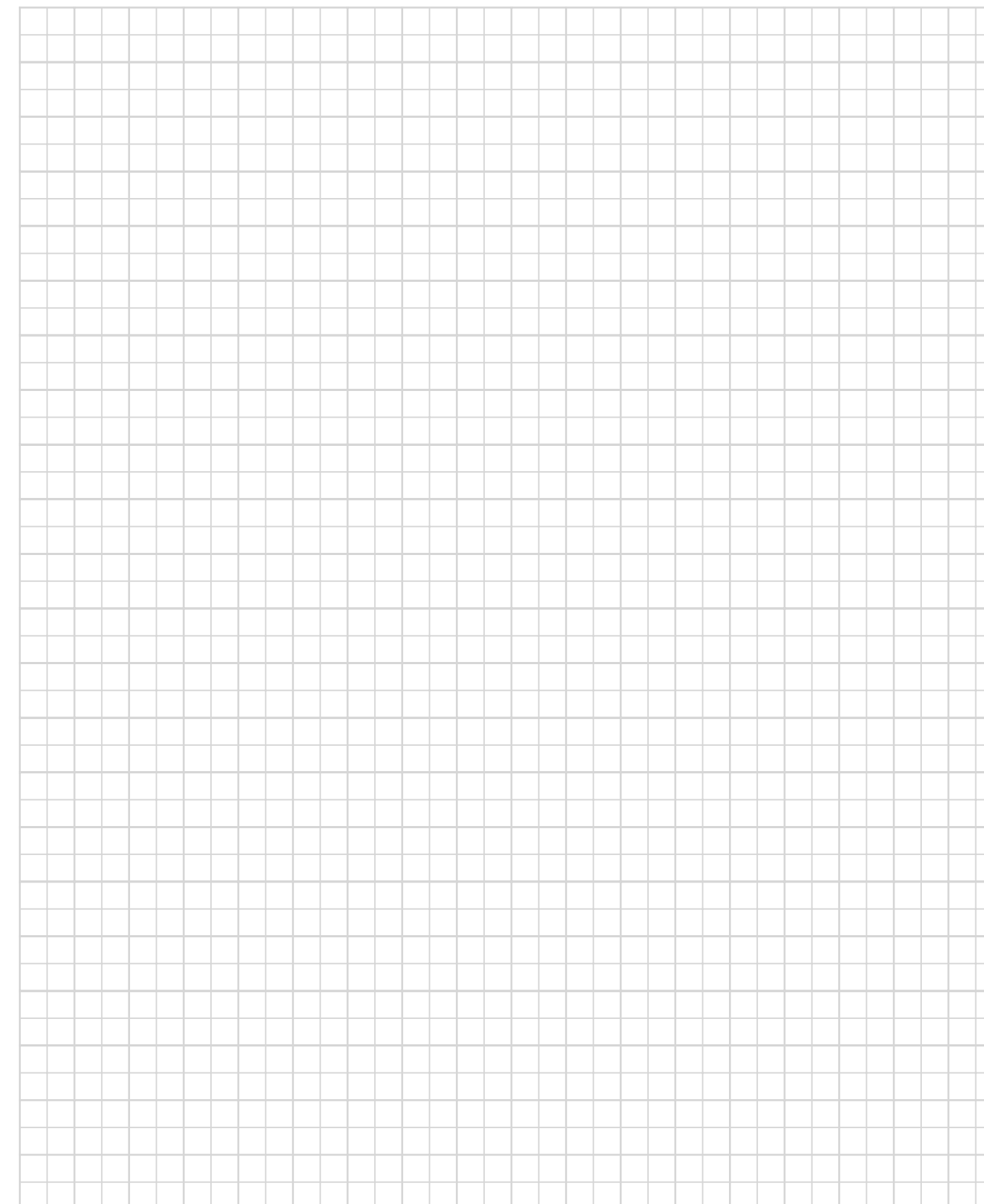
In our business it is important to introduce sustainability and this is why we take care of the environment and work conditions of our employees.

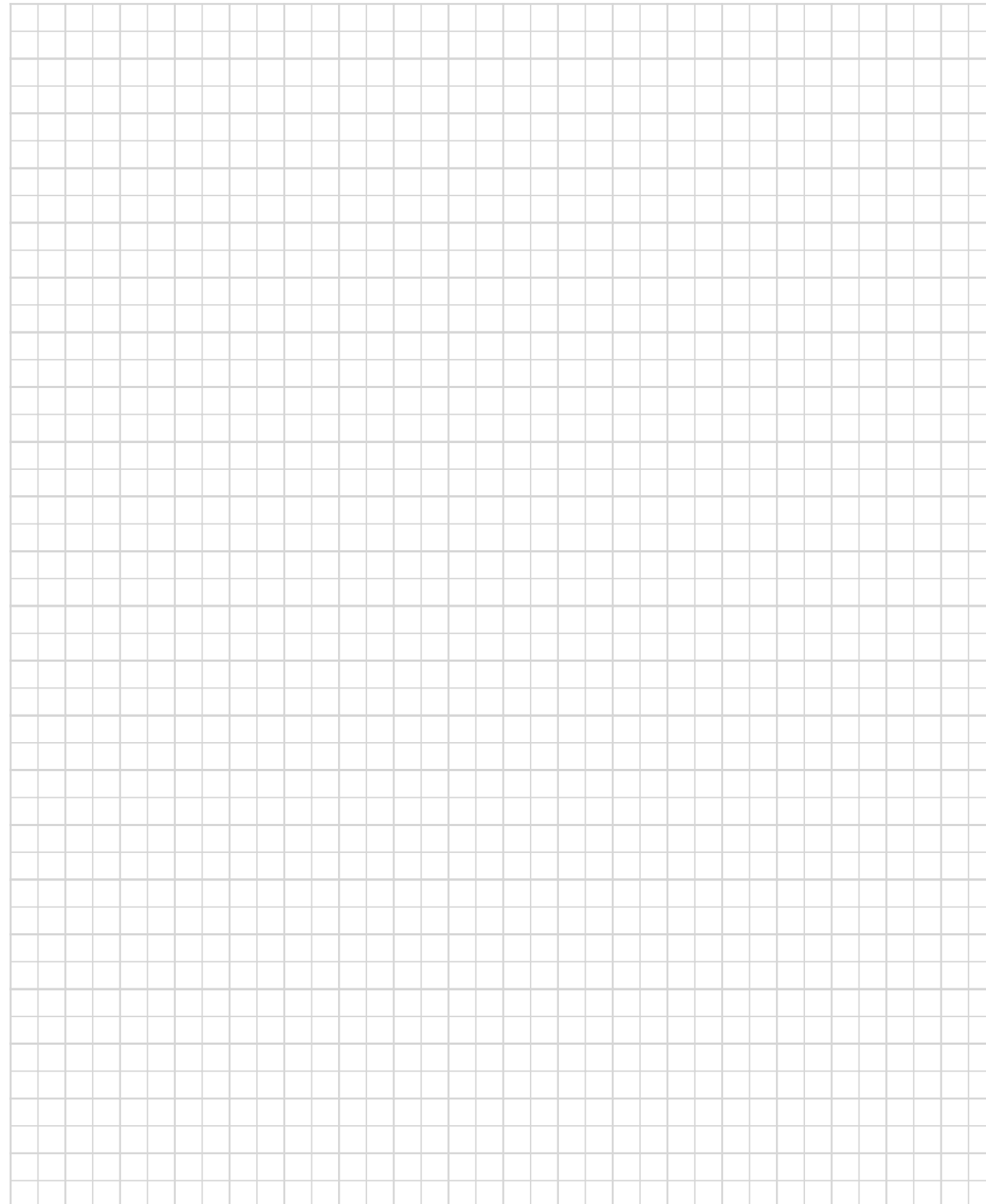
Offer:

- complex systems for mining industry,
- wall scraper conveyors of different types,
- belt conveyors,
- crushers,
- hydraulic and friction props,
- hook slings,
- other mining appliances and machines,
- repairs of appliances and machines,
- metarullgical products trade,
- painting and blasting services.

Company's quality policy is carried out by our employees on every step of production process.

WE LOOK FORWARD TO COOPERATION WITH YOU!





MP – 1300/1500 & MP-90 Dynamic Crushers

The MP-1300/1500 and MP-90 crushers are assigned to be built in on a haulage scraper belt conveyor and consist of three main subassemblies: bearing pad inlet, the middle part, outlet segment.

The crusher on the inlet and outlet side is provided with joining elements consistent with the set of a scraper conveyor. Therefore, there is no difficulty to build the crusher in the route of any scraper conveyor.

There are four crushing roots applied in the MP-1300 and MP-90 versions. Two of them are located coaxially next to each other, whereas the other two are rearranged of 180°. Additionally, there are two crushing roots built in the MP-1500 version.

They crush the winning into a size that allows further transport.

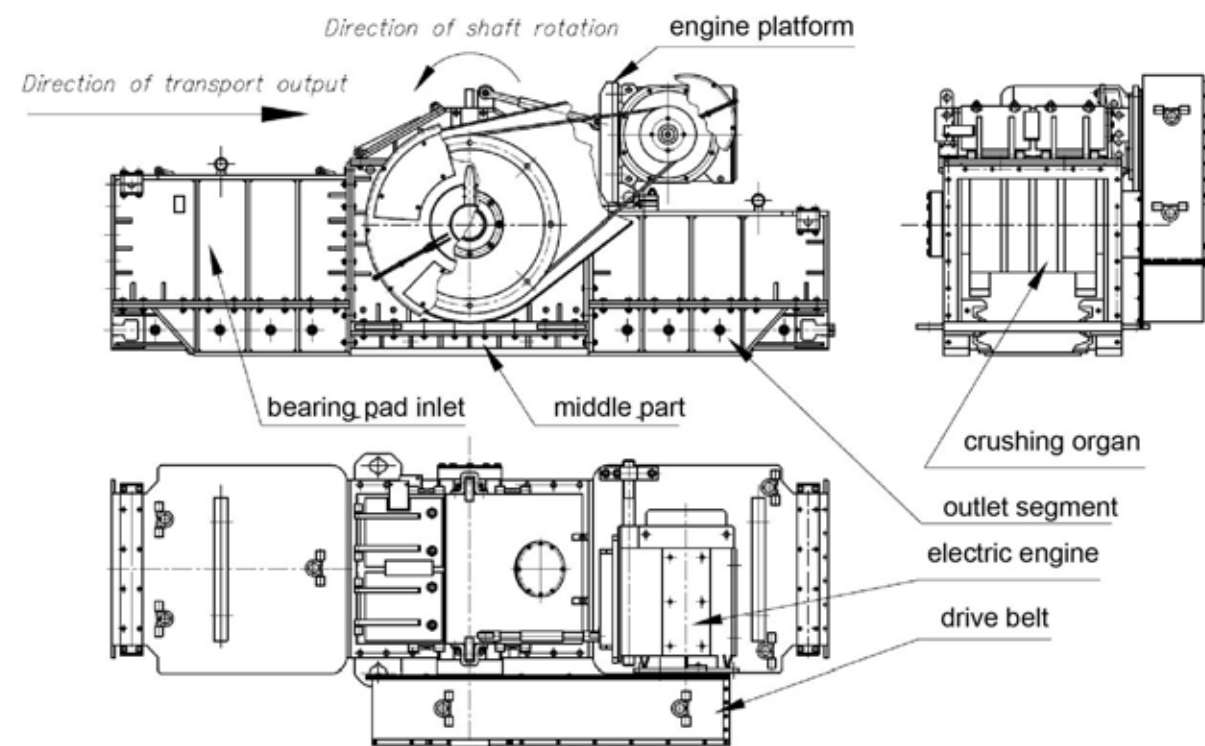
These crushers are equipped with plumbing set which is responsible for lifting and sinking the shaft- crushing organ, with relation to crushing panel that allows abrupt change of the largeness of the crushing parts.

Technical data			
Properties	Version 1300	Version 1500	Version 90
Engine power	90 – 132 kW	160 – 200 kW	2x90 kW
Drive	5 belts SPC	8 belts SPC	Spur gear
Cooperating width of the conveyor	642 – 864 mm	842 – 1150 mm	640 – 860 mm
Capacity	do 1300 Mg/h	do 1500 Mg/h	do 1000 Mg/h
Mechanical advantage	i=3,15		i=3
Maximum grain size	600x600xL	700x700xL	500x500xL
Grains' final size	150 to 400 mm		160 to 400 mm
Shaft's location regulation scope	5 x 50 = 250 mm		6 x 40 = 240 mm
Passage gap	150 to 400 mm		160 to 400 mm
Engine turns	468 min ⁻¹		490 min ⁻¹
Rams' peripheral speed	V=22,6 m/s		V=23,5 m/s
Drive wheel diameter	Φ 355 mm		-
Flywheel diameter	Φ 1120 mm		-
Ram's work radius	Φ 440 mm		
Crushing organ armament	4 ram's sets	8 ram's sets	4 ram's sets
Dynamic energy	340318 Nm	380920 Nm	340318 Nm
Tip ram material	Hartplast-electric hardfacing EN600B		
Thickness of the crushing plate	60 mm		
Material	HARTPLAST		
Crusher height	1750 mm		1340 mm
Crusher width	1700 mm	2100 mm	2000 mm
Crusher length	4500 mm		3000 mm
Crusher weight	~ 12 t	~ 15 t	~ 9 t



EQUIPMENT FOR INDUSTRY





MP 1300/1500dynamic crusher



NOTES:

CONTACT DETAILS:

MTP S.A. ul. Kościuszki 12a, 34-350 Węgierska Góra
Tel./ fax: +48 33 864 08 25, e-mail: biuro@mtpsa.pl
Trade Branch: Bratnia 1, 43-200 Pszczyna, tel.: +48 32 210 12 34
„MATIX” Ltd. Żyzna 11 „L”, 42-202 Częstochowa
NIP: 573-25-64-874, REGON: 152160295, KRS: 0000194457
Tel.: +48 34 369 92 54, fax: +48 34 369 71 41, <http://www.matix.net.pl>, e-mail: sekretariat@matix.com.pl



EQUIPMENT FOR INDUSTRY



REFERENCES

MTP S.A. and Matix receive numerous references from their contractors:
The companies have received references from:

Jastrzębska Spółka Węglowa



Katowicki Holding Węglowy S.A.



Kompania Węglowa S.A.



Lubelski Węgiel „Bogdanka” S.A.



Tauron Wydobycie S.A.



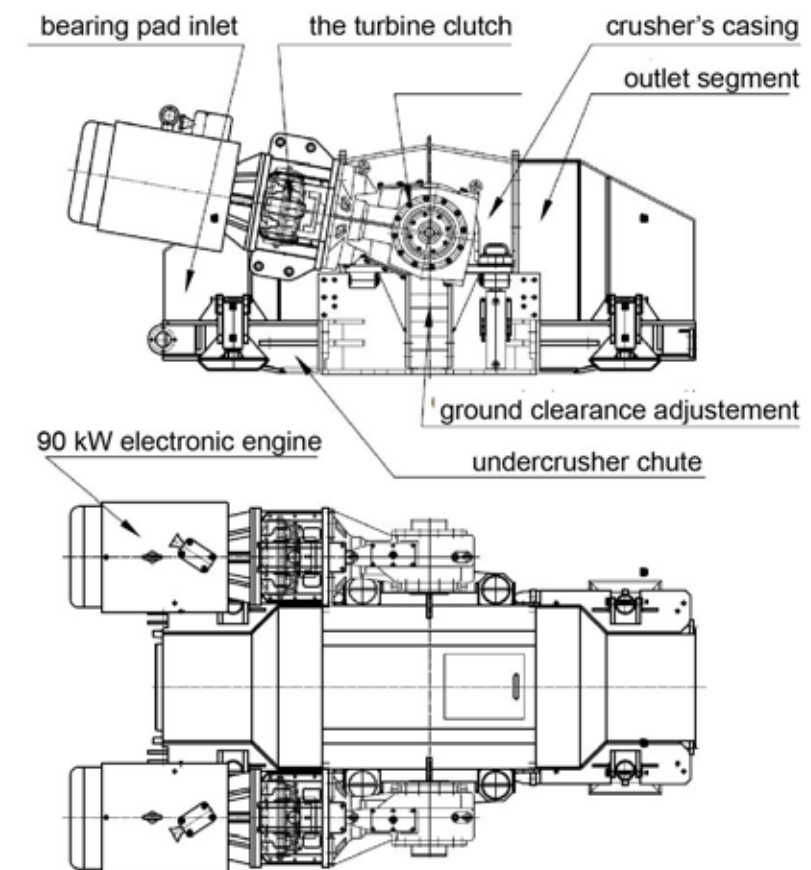
Przedsiębiorstwo Produkcyjno-Górnictwo „ROW-JAS” Sp. z o.o.



as well as:

Lintar S.A., Jastrzębskie Zakłady Remontowe Sp. z o.o., PPU Piomet, PPUH Polwent, MAS Sp. z o.o., GZUG Sp. z o.o. and others.

Thank you. We wish us further cooperation.



MP - 90 dynamic crusher



MP-26 Haulage Platform for inclination of up to 25°

This kind of platform car is used to transport devices on surface or in coal mines which masses are no more than 26 tones.

Transport by the platform along with load is allowable only if drawing shaft's mine cages have adequate: overall dimensions, load capacity and shaft's fittings adapted to low platform cars.

RBK5 grips applied in a rotary way enable using transport tension members for load stabilization. Strings of RZKR type are recommended.

Platform can be used as a pallet to carry transported loads by underslung railway.

The platform can be operated in underground coal mines, in non-methane and methane areas, in excavations with **a**, **b** or **c** degree of probability of methane outburst, as well as in excavations with **A** or **B** degree of probability of coal dust outburst.

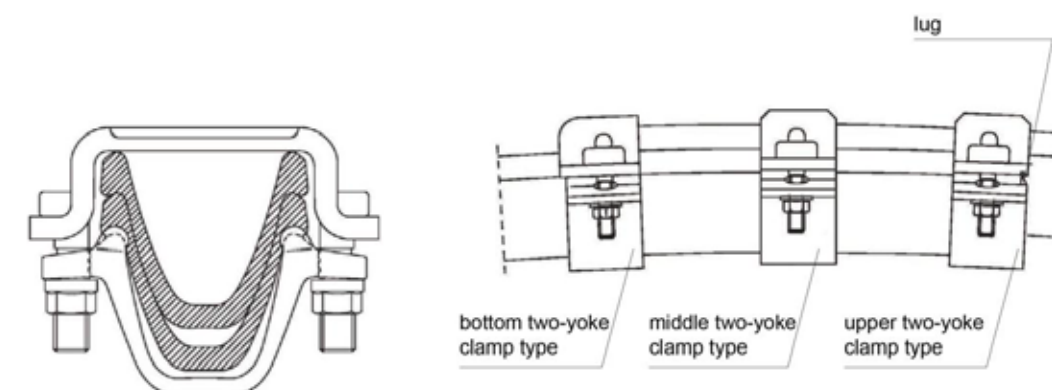


SD & SDO Double-yoke Clamps

These clamps are used to join elements of the gallery lining made of sections of V type.

The clamp consists of an upper yoke, a bottom yoke, two M24 bolts and two M24 nuts.

The SD and SDO double-yoke stirrups can be applied in underground coal mines, in non-methane and methane areas, in excavations with **a**, **b** or **c** degree of probability of methane outburst, as well as in excavations with **A** or **B** degree of probability of coal dust outburst.



The SD and SDO two-yoke stirrups can be made in different versions and different types according to the following table:

Sort	Type	upper yoke	bottom yoke	bolt	nut	in sum	set
		weight kg					
SD21	SDD	2,50	2,70	0,30 x 2	0,10 x 2	6,00	11,40
	SDG	1,90	2,70	0,30 x 2	0,10 x 2	5,40	
SD25	SDD	3,00	2,75	0,30 x 2	0,10 x 2	6,55	12,45
	SDG	2,35	2,75	0,30 x 2	0,10 x 2	5,90	
SD025	SDOD	2,25	2,75	0,45 x 2	0,10 x 2	5,80	11,10
	SDOG	1,75	2,75	0,45 x 2	0,10 x 2	5,30	
SD29	SDD	3,00	3,70	0,45 x 2	0,10 x 2	8,60	16,80
	SDG	3,40	3,70	0,45 x 2	0,10 x 2	8,20	
SD029	SDOD	2,80	3,70	0,45 x 2	0,10 x 2	7,60	14,90
	SDOG	2,50	3,70	0,45 x 2	0,10 x 2	7,30	
SD36	SDD	4,70	4,70	0,45 x 2	0,10 x 2	10,50	30,80
	SDS	4,35	4,70	0,45 x 2	0,10 x 2	10,15	
	SDG	4,35	4,70	0,45 x 2	0,10 x 2	10,15	

VALENT-SN Friction Props (immediate support)

The VALENT-SN friction props are designated to direct or indirect support of a roof as an individual lining or additional reinforcing lining.

These props are used:

- to reinforce frames of gallery excavations' lining, as props of simple lining of splitting excavations, as well as to reinforce vaulted lining of tunnel excavation where increased tensions and pressure of rock mass appear,
- as individual props in mining excavation which are endangered with rock mass quakes,
- as reinforcing element that supports an ultimate lining of a different type,
- to apply in collapsing longwalls of the excavation with individual lining.

Series of the VALENT-SN friction props of immediate support consists of 18 props that are of varied maximum and minimum height and varied values of minimum working capacity.

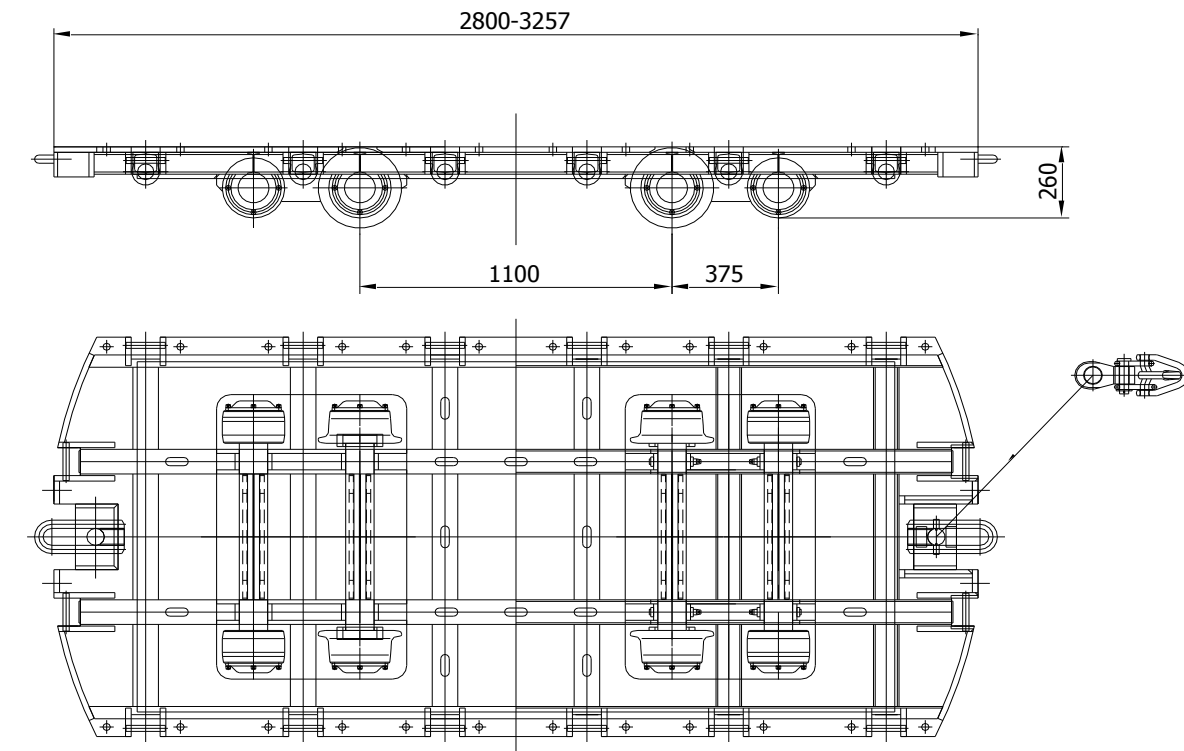
The VALENT-SN friction props of immediate support have two variants of core prints: with a permanent and a replaceable crown head.

These props can be used in underground coal mines, in non-methane and methane areas, in excavations with **a**, **b** or **c** degree of probability of methane outburst, as well as in excavations with **A** or **B** degree of probability of coal dust outburst.

Technical parameters of VALENT-SN friction props:

Valent - SN friction prop	Height of max. unfolded prop	Height of folded prop (permanent head)	Height of folded prop (replaceable head)	Nominal support capacity	Resistance to dynamic load (toughness)	Working support capacity	Peak support capacity (overload)
Valent-SN-400/710	710	500	558	400	400±20%	600	Tak
Valent-SN-400/800	800	545	603				
Valent-SN-400/900	900	595	653				
Valent-SN-400/1000	1000	649	708				
Valent-SN-400/1120	1120	709	768				
Valent-SN-400/1250	1250	774	833				
Valent-SN-400/1400	1400	849	908				
Valent-SN-400/1600	1600	949	1008				
Valent-SN-400/1800	1800	1049	1108				
Valent-SN-400/2000	2000	1149	1208				
Valent-SN-400/2240	2240	1269	1328				
Valent-SN-400/2500	2500	1399	1458				
Valent-SN-315/2800	2800	1549	1608	315	315±20%	472,5	Tak
Valent-SN-250/3150	3150	1724	1783	250	250±20%	375	
Valent-SN-250/3550	3550	1924	1983				
Valent-SN-250/4000	4000	2374	2378				
Valent-SN-250/4250	4250	2624	2628	200	200±25%	300	Tak
Valent-SN-200/4500	4500	2874	2878				

MTP S.A. ul. Kościuszki 12a, 34-350 Węgierska Górk
 Tel./ fax: +48 33 864 08 25, e-mail: biuro@mtpsa.pl
 Trade Branch: Bratnia 1, 43-200 Pszczyna, tel.: +48 32 210 12 34
 „MATIX” Ltd. Żyzna 11 „L”, 42-202 Częstochowa
 NIP: 573-25-64-874, REGON: 152160295, KRS: 0000194457
 Tel.: +48 34 369 92 54, fax: +48 34 369 71 41, http://www.matix.net.pl, e-mail: sekretariat@matix.com.pl



Technical data	
Properties	Values
Dimensions: height x width x length	260 x 1000 or 1460 x 2800-3257 mm
Pallet's dimensions	110 x 1000 or 1460 x 2800-3267 mm
Permissible load capacity	260 kN
Permissible max. speed in: - cross-cuts - inclined excavations	8 km/h 2 km/h
Permissible max drivage slope inclination - with hook - with pin diameter 60mm and universal track catcher	4° 25°
Width of rail	750 mm
Weight	1967 kg

MTP S.A. ul. Kościuszki 12a, 34-350 Węgierska Górk
 Tel./ fax: +48 33 864 08 25, e-mail: biuro@mtpsa.pl
 Trade Branch: Bratnia 1, 43-200 Pszczyna, tel.: +48 32 210 12 34
 „MATIX” Ltd. Żyzna 11 „L”, 42-202 Częstochowa
 NIP: 573-25-64-874, REGON: 152160295, KRS: 0000194457
 Tel.: +48 34 369 92 54, fax: +48 34 369 71 41, http://www.matix.net.pl, e-mail: sekretariat@matix.com.pl

MP-18 Haulage Platform for inclination of up to 25°

This kind of platform car is used to transport devices on surface or in coal mines which masses are no more than 18 tones.

Pallet can be disassembly from chassis and so that it can be used for load haulage via cable lift. Chassis is mobile, it can be transferred separately. It is fully changeable and it can be installed to another platform's pallet.

Chassis should not be use for load transferring. Stanchion units are equipped with regulation systems what enable to set load on suitable location.

There is no need of using additional elements.

Transport by the platform along with load is allowable only if drawing shaft's mine cages have adequate: overall dimensions, load capacity and shaft's fittings adapted to low platform cars.

The platform can be operated in underground coal mines, in non-methane and methane areas, in excavations with **a**, **b** or **c** degree of probability of methane outburst, as well as in excavations with **A** or **B** degree of probability of coal dust outburst.



MTP S.A. ul. Kościuszki 12a, 34-350 Węgierska Górka
Tel./ fax: +48 33 864 08 25, e-mail: biuro@mtpsa.pl
Trade Branch: Bratnia 1, 43-200 Pszczyna, tel.: +48 32 210 12 34
„MATIX” Ltd. Żyzna 11 „L”, 42-202 Częstochowa
NIP: 573-25-64-874, REGON: 152160295, KRS: 0000194457
Tel.: +48 34 369 92 54, fax: +48 34 369 71 41, http://www.matix.net.pl, e-mail: sekretariat@matix.com.pl

VHS 40 & VHS 50 Hook Slings

The VHS hook slings are designed to sling rails of suspended monorail runways to a vaulted lining. The VHS hook slings can be also used for crosswise stabilization of a railway (lashings).

The connectors of these slings are adjusted to be fixed on sections of gallery linings which have the following profiles: V25, V29, V32, V34, V36 and V25D, V29D, V32D, V34D, V36D, V44D, as well as V40, V42 and V40D and V42D, as well as KS/KO, where : D – means double profile V (end-jointed).

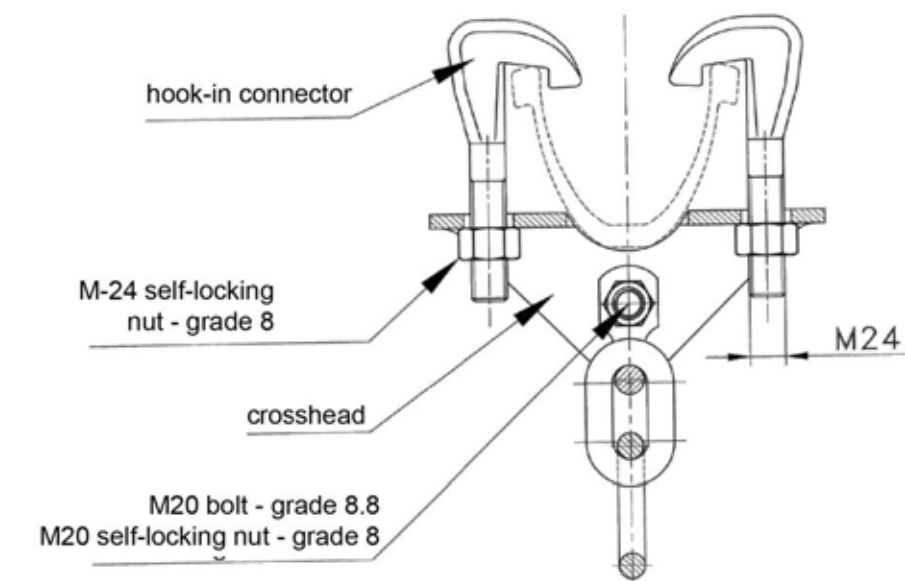
The VHS hook sling consists of hook-in connectors which are drop-forged with an M24 screw thread of 6.8 grade and M24 self-locking nuts of 8 grade, and a crosshead made of metal sheet along with an M20 bolt of 8.8 grade and an M20 self-locking nut of 8 grade and optionally a shackle (at client's request).

The VHS hook slings are adjusted to cooperation with chains of the following dimensions: 18x64, 16x80, 18x90.

The VHS hook slings can be applied in underground coal mines, in non-methane and methane areas, in excavations with **a**, **b** or **c** degree of probability of methane outburst, as well as in excavations with **A** or **B** degree of probability of coal dust outburst.

Maximum load of a hook sling (guaranteed safety factor $n=4$) is:

- 40 kN for VHS 40 sling
- 50 kN for VHS 50 sling



Components of the VHS hook slings

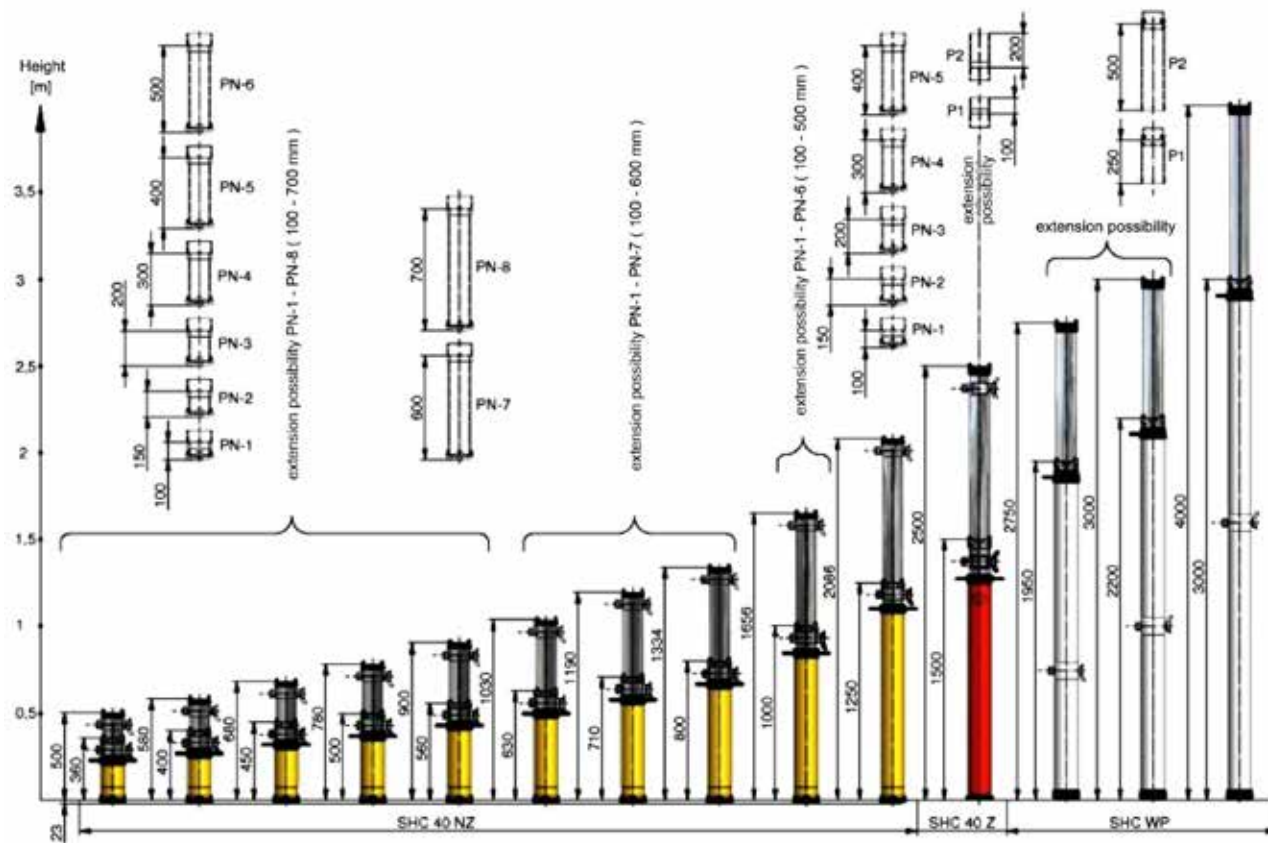
MTP S.A. ul. Kościuszki 12a, 34-350 Węgierska Górka
Tel./ fax: +48 33 864 08 25, e-mail: biuro@mtpsa.pl
Trade Branch: Bratnia 1, 43-200 Pszczyna, tel.: +48 32 210 12 34
„MATIX” Ltd. Żyzna 11 „L”, 42-202 Częstochowa
NIP: 573-25-64-874, REGON: 152160295, KRS: 0000194457
Tel.: +48 34 369 92 54, fax: +48 34 369 71 41, http://www.matix.net.pl, e-mail: sekretariat@matix.com.pl

SHC Hydraulic Prop

The SHC hydraulic props are applied in underground mining excavations and are designed to support a mining roof in longwalls that are exploited for collapse, in splitting excavations and as an additional reinforcement of lining in gallery excavations.

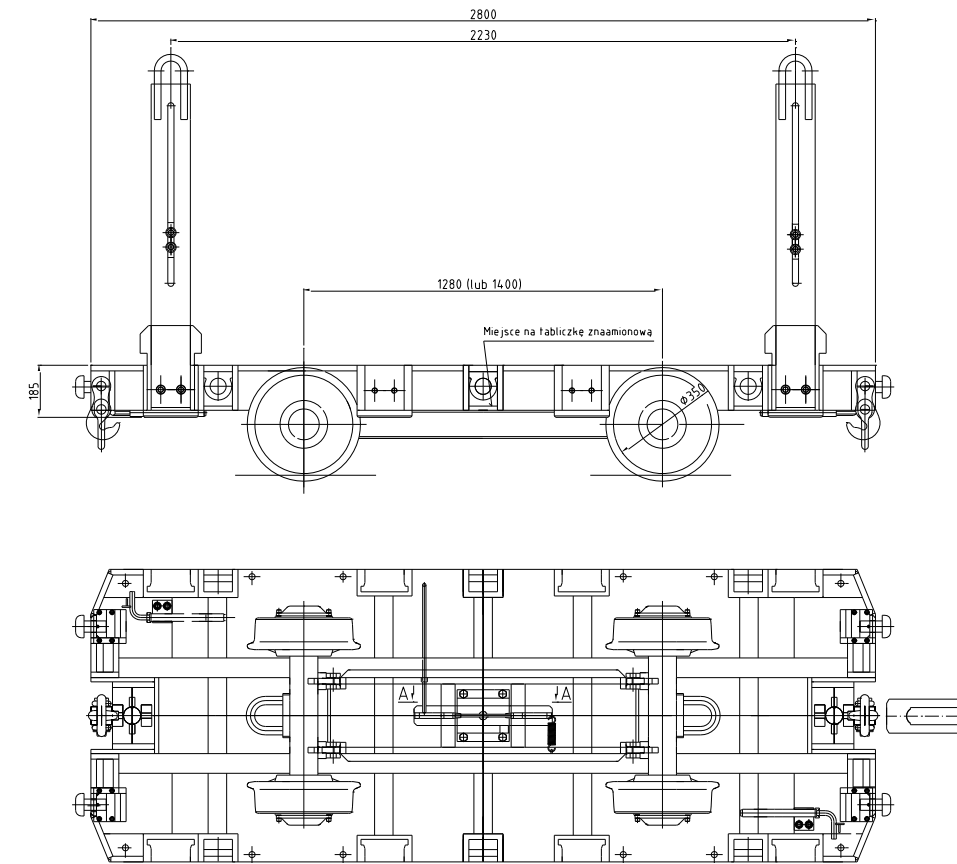
They can be applied in underground coal mines, in non-methane and methane areas, in excavations with **a**, **b** or **c** degree of probability of methane outburst, as well as in excavations with **A** or **B** degree of probability of coal dust outburst.

They can constitute an independent lining or they can reinforce a lining of a different type. The props can be equipped with typical power supply sockets adjusted to special gun power supplies or plug-and-socket connectors of Stecko type enabling direct connection of a bayonet connector of a hydraulic high pressure pipe. They perform in the central outward power supply system with the usage of water-oil emulsion.



Dimension scopes of SHC hydraulic props application

MTP S.A. ul. Kościuszki 12a, 34-350 Węgierska Górk
 Tel./ fax: +48 33 864 08 25, e-mail: biuro@mtpsa.pl
 Trade Branch: Bratnia 1, 43-200 Pszczyna, tel.: +48 32 210 12 34
 „MATIX” Ltd. Żyzna 11 „L”, 42-202 Częstochowa
 NIP: 573-25-64-874, REGON: 152160295, KRS: 0000194457
 Tel.: +48 34 369 92 54, fax: +48 34 369 71 41, http://www.matix.net.pl, e-mail: sekretariat@matix.com.pl



Technical data	
Properties	Values
Dimensions: height x width x length	385 x 1250 or 1400x2800 mm
Dimensions with built stanchion sets	1495 x 1250 or 1400x2800mm
Pallet dimensions	185 x 1250 or 1400 x 2800 mm
Permissible load capacity	180 kN
Permissible max. speed in: - cross-cuts - inclined excavations	8 km/h 2 km/h
Tracks` inclination of rail transport	up to 25°
Track`s width	535 ÷ 750 mm
Wheel track	1280 mm or 1400 mm
Mass with stanchion sets	1620 kg

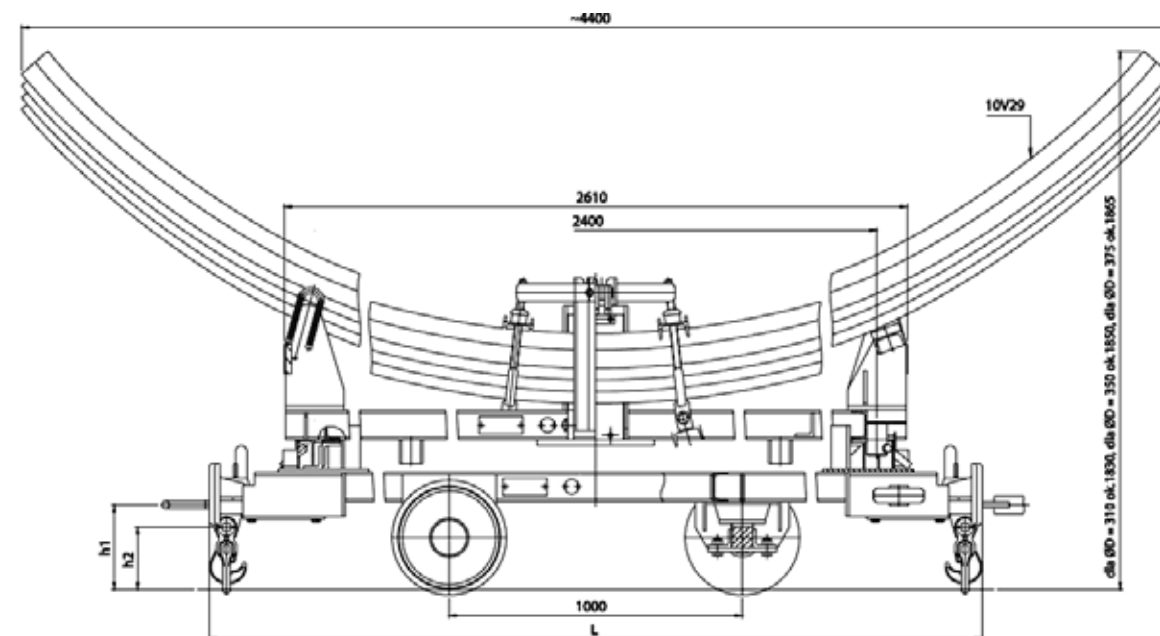
MTP S.A. ul. Kościuszki 12a, 34-350 Węgierska Górk
 Tel./ fax: +48 33 864 08 25, e-mail: biuro@mtpsa.pl
 Trade Branch: Bratnia 1, 43-200 Pszczyna, tel.: +48 32 210 12 34
 „MATIX” Ltd. Żyzna 11 „L”, 42-202 Częstochowa
 NIP: 573-25-64-874, REGON: 152160295, KRS: 0000194457
 Tel.: +48 34 369 92 54, fax: +48 34 369 71 41, http://www.matix.net.pl, e-mail: sekretariat@matix.com.pl

MP – 10 Transporting Device

The container is designed mainly for rail transport of lining arches of the 3 or 4 – element – height of 8, 9 or 10/ V 25 and V 29 on horizontal and sloping transport ways according to the technical documentations conditions (DTR). The bodywork of the carriage can be transported on routes of the overhead narrow-gauge railways.

All elements transported by this device should be firmly attached to it with the use of anchorages provided by the manufacturer or other self-made (by prior agreement with the manufacturer) that will not weaken platform structure.

The platform may be used in underground coal mines, in non-methane and methane areas, in excavations with **a**, **b** or **c** degree of probability of methane outburst, as well as in excavations with **A** or **B** degree of probability of coal dust outburst.



ŁKW Corner Connector

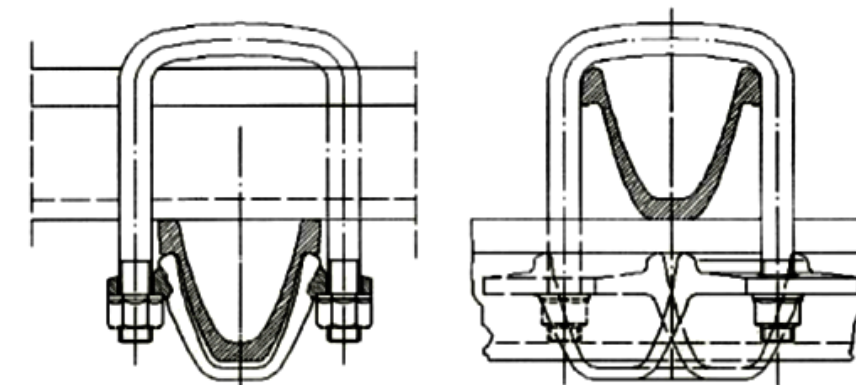
The corner connectors with hook bolts (ŁKW_h) and corner connectors with clevis bolts (ŁKW) are designed to be screwed to a frame of a lining made of V21, V25, V29, V32, V34, V36 channel sections, joists made of V21, V25, V29, V32, V34, V36 channel sections, universal USG mining roof, S18, S24, S30, S42 rails and SCG modular roofs with the usage of one yoke and two hook bolts or one yoke and a clevis bolt.

The ŁKW_h and ŁKW corner connectors can be also used in other cases when the sections cross at right angle.

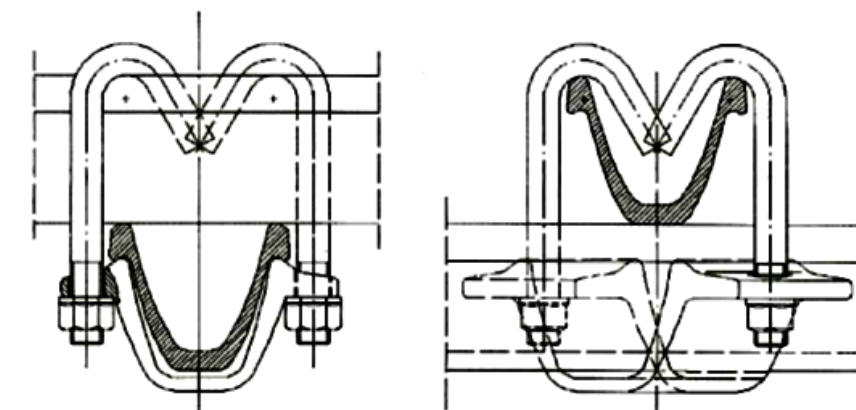
Yokes of the ŁKW_h and ŁKW corner connectors along with a special anchor washer; or with suitable holes; can be used to anchor roof bows to rock mass with the usage of two anchors with M20, M22 or M24 screw threads at the ends.

They consist of yokes, two hook bolts or one clevis bolt and two nuts.

Corner connectors can be applied in underground coal mines, in non-methane and methane areas, in excavations with **a**, **b** or **c** degree of probability of methane outburst, as well as in excavations with **A** or **B** degree of probability of coal dust outburst.



ŁKW corner connector with a clevis bolt



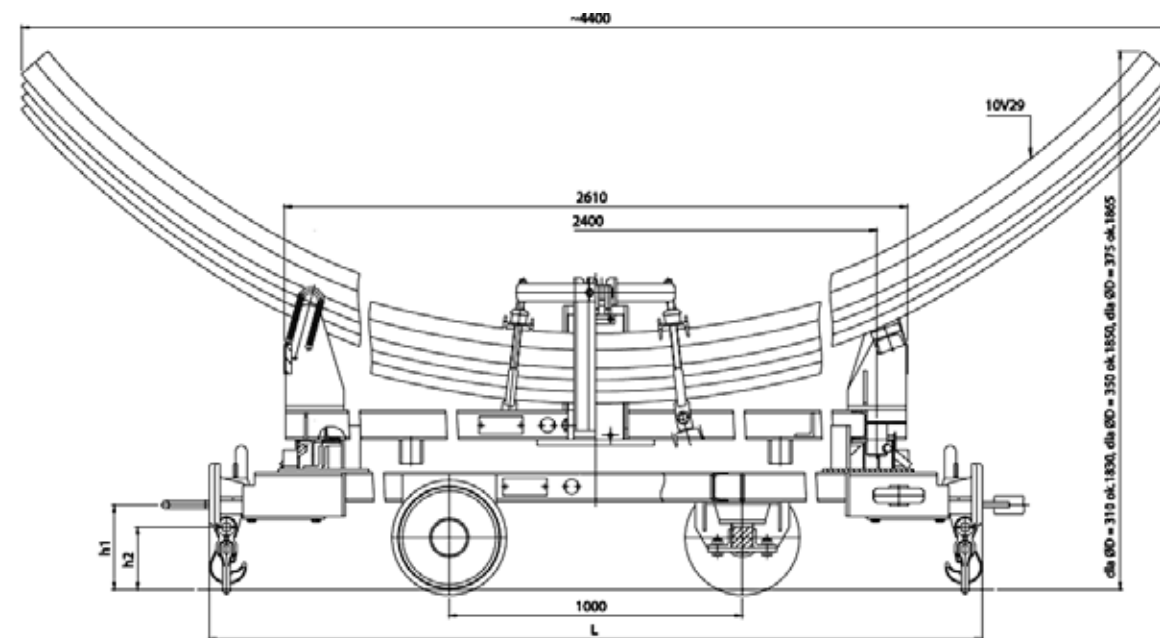
ŁKW corner connector with hook bolts

MP – 10 Transporting Device

The container is designed mainly for rail transport of lining arches of the 3 or 4 – element – height of 8, 9 or 10/ V 25 and V 29 on horizontal and sloping transport ways according to the technical documentations conditions (DTR). The bodywork of the carriage can be transported on routes of the overhead narrow-gauge railways.

All elements transported by this device should be firmly attached to it with the use of anchorages provided by the manufacturer or other self-made (by prior agreement with the manufacturer) that will not weaken platform structure.

The platform may be used in underground coal mines, in non-methane and methane areas, in excavations with **a**, **b** or **c** degree of probability of methane outburst, as well as in excavations with **A** or **B** degree of probability of coal dust outburst.



ŁKW Corner Connector

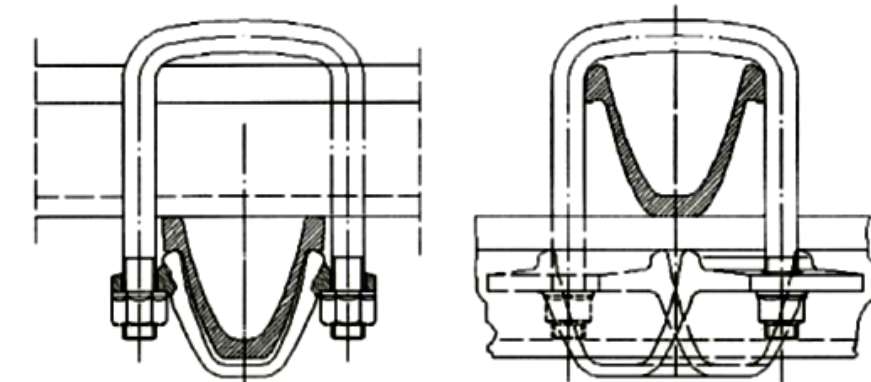
The corner connectors with hook bolts (ŁKWh) and corner connectors with clevis bolts (ŁKW) are designed to be screwed to a frame of a lining made of V21, V25, V29, V32, V34, V36 channel sections, joists made of V21, V25, V29, V32, V34, V36 channel sections, universal USG mining roof, S18, S24, S30, S42 rails and SCG modular roofs with the usage of one yoke and two hook bolts or one yoke and a clevis bolt.

The ŁKWh and ŁKW corner connectors can be also used in other cases when the sections cross at right angle.

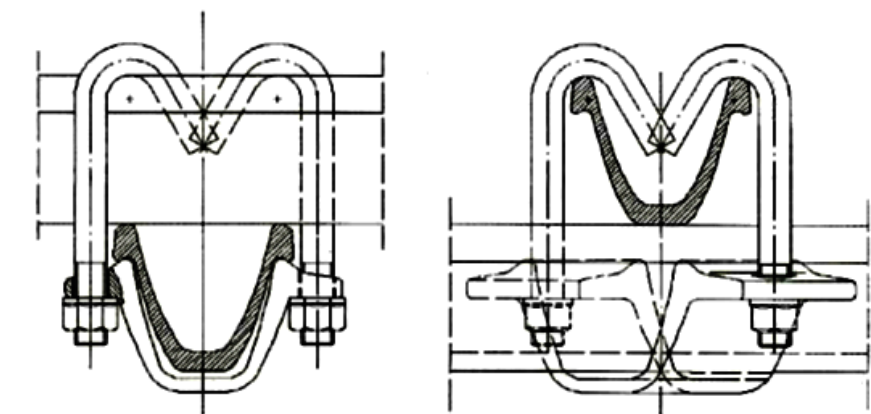
Yokes of the ŁKWh and ŁKW corner connectors along with a special anchor washer; or with suitable holes; can be used to anchor roof bows to rock mass with the usage of two anchors with M20, M22 or M24 screw threads at the ends.

They consist of yokes, two hook bolts or one clevis bolt and two nuts.

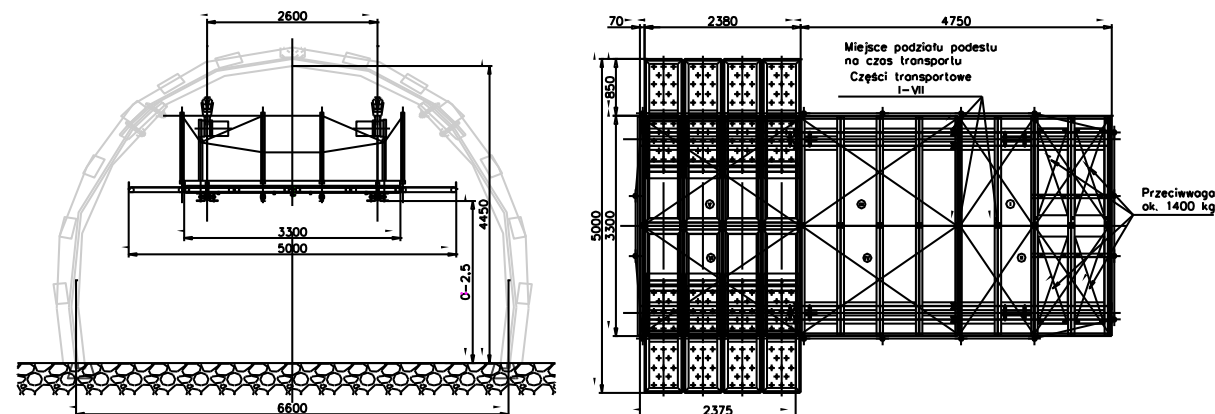
Corner connectors can be applied in underground coal mines, in non-methane and methane areas, in excavations with **a**, **b** or **c** degree of probability of methane outburst, as well as in excavations with **A** or **B** degree of probability of coal dust outburst.



ŁKW corner connector with a clevis bolt



ŁKW corner connector with hook bolts

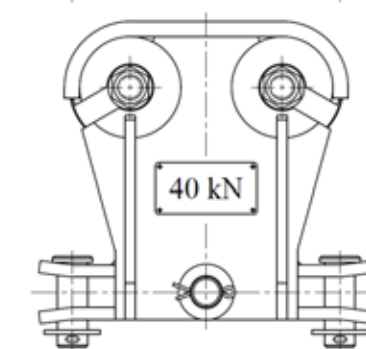
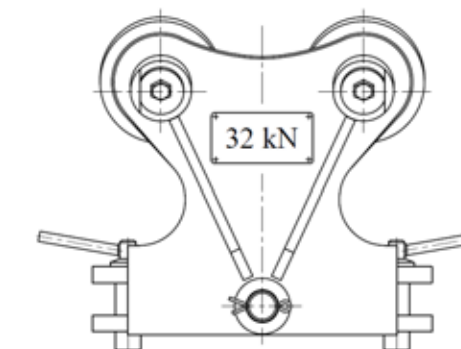
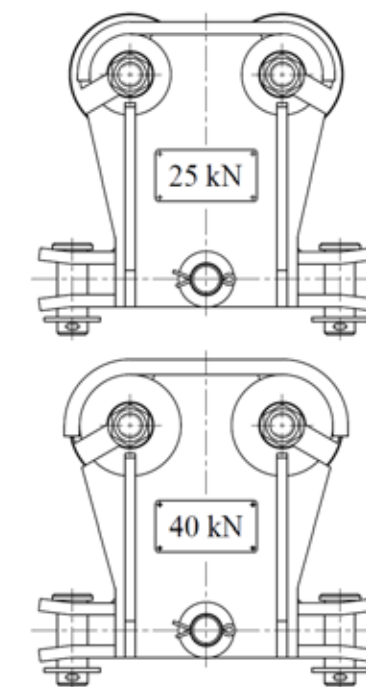
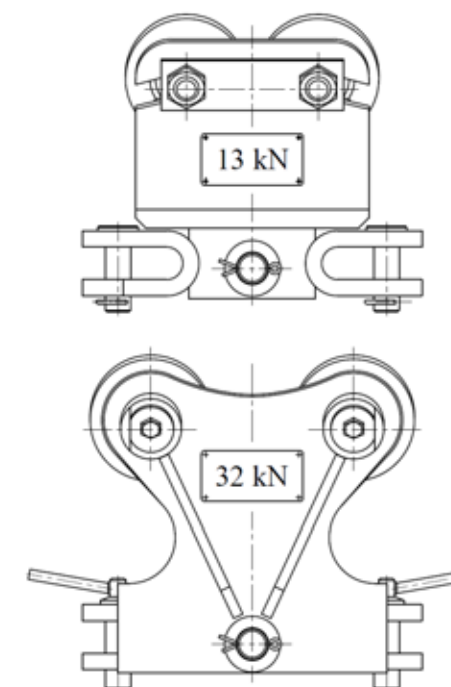
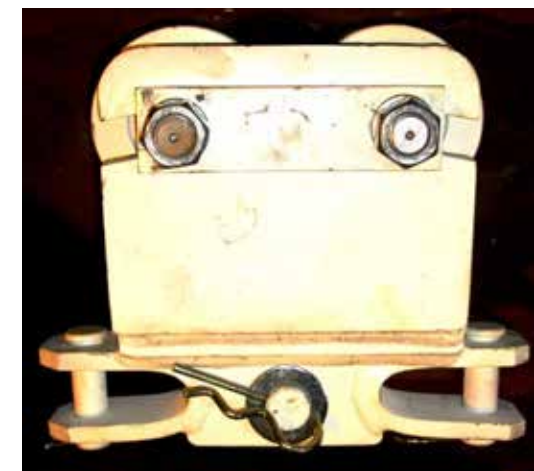


Technical data	
Properties	Values
Width	3300 -5000 mm
Lenght	Approx. 7200 mm
Height	300 mm
Platform mass without balance weight	Approx. 3400 kg
Carrying capacity	2500 kg
Height of raising	Up to 2,5 m
Supply	pneumatic
Pressure of supplying air	0,4 – 0,6 MPa
Velocity on horizontal section	max. 6 m/min
Speed of Rusing	Approx. 1 m/min
Noise level(max)	85 dB(A)
Max fall's tracks of line	
- lengthwise	± 10°
- transverse	± 4°
Distance between line`s raili	Approx. 2600 mm
Power consumption during raising	4 x 1,8 kW
Power consumption during moving	2 x 1,1 kW
Working safety chain	13 x 39 mm (quality grade 8) endurance 2x5300 kg
Minimal radius of track [m]	
- vertical	8 m
- horizontal	4 m

13 kN, 25 kN, 32 kN, 40 kN Carriages

The carriages are designed to work both on the surface and in underground coal mines, in non-methane and methane areas, in excavations with **a**, **b** or **c** degree of probability of methane outburst, as well as in excavations with **A** or **B** degree of probability of coal dust outburst.

The carriages are elements for suspending and moving belt feeders, conveyors, containers and other types of mining machines on the rails (both in underground mines, as well as on the surface).

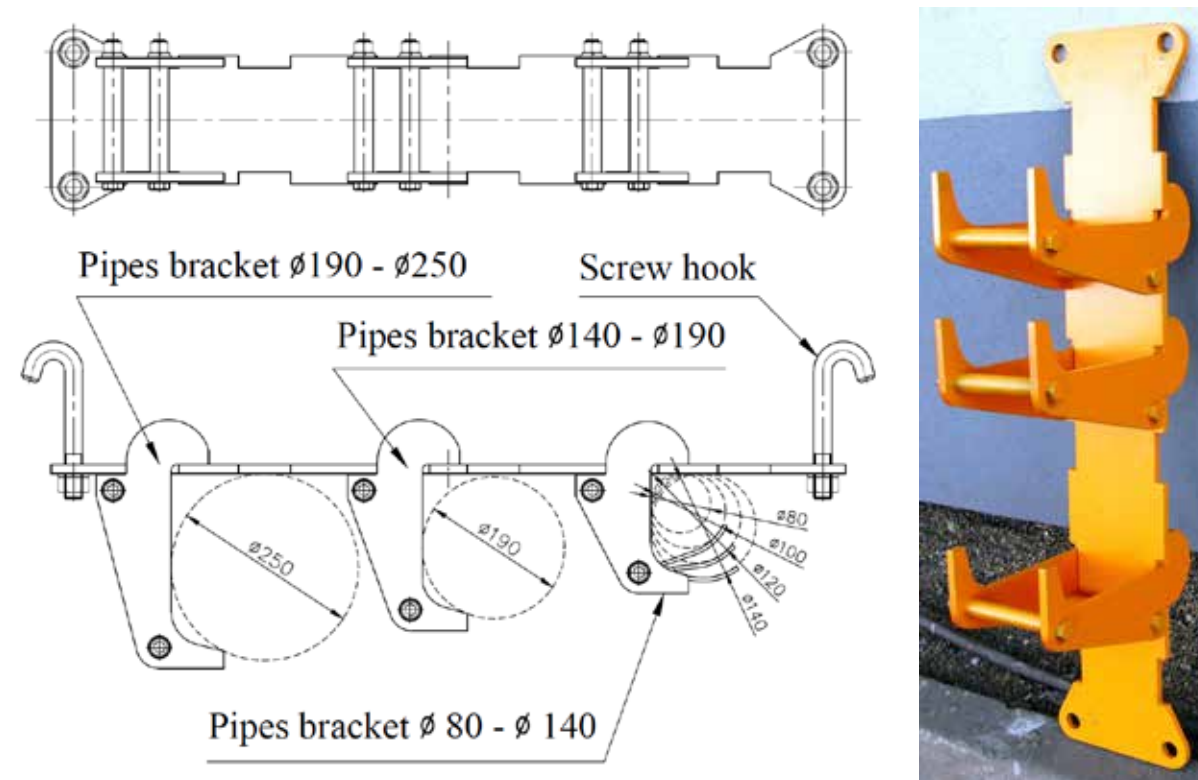


WPR 80/300 - V21 – V36 Tubes and Pipes Hangers

The WPR 80/300 hangers are designed for suspending pipes and electric or hydraulic wires in the underground mining excavations.

The versatility of their implementation allows it to be used in the mining excavations which are covered with susceptible arcs from V21 to V36.

It can be used in underground coal mines, in non-methane and methane areas, in excavations with **a**, **b** or **c** degree of probability of methane outburst, as well as in excavations with **A** or **B** degree of probability of coal dust outburst.



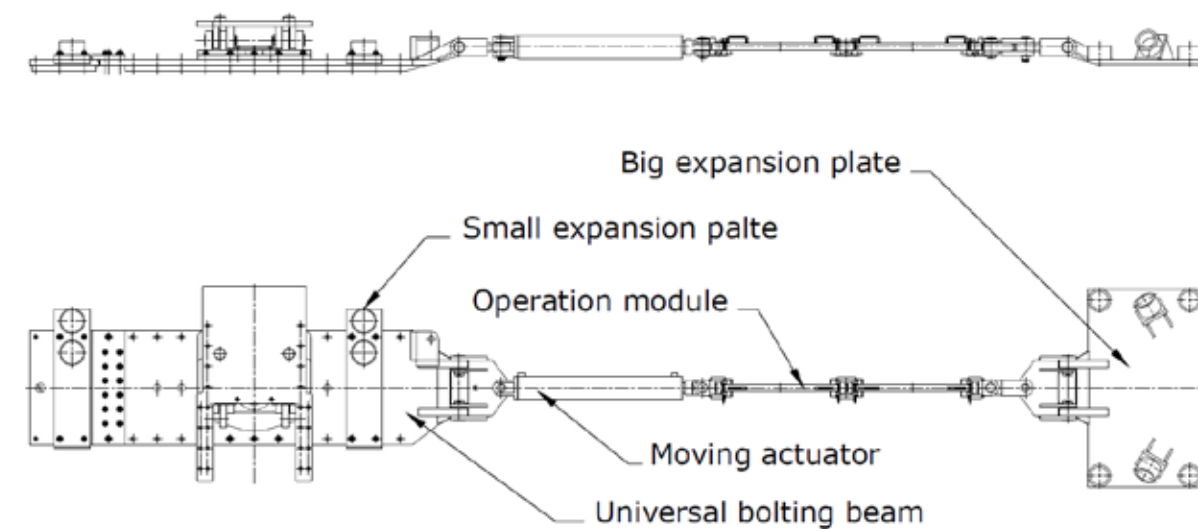
Technical data	
Properties	Values
Max. load of hanger WPR 80/300	16 kN
Max. load of bracket 300	3,2 kN
Max. load of bracket 300	3,8 kN
Max. load of bracket 300	4,4 kN
Max. load of bracket 300	5,4 kN

MTP S.A. ul. Kościuszki 12a, 34-350 Węgierska Górk
 Tel./ fax: +48 33 864 08 25, e-mail: biuro@mtpsa.pl
 Trade Branch: Bratnia 1, 43-200 Pszczyna, tel.: +48 32 210 12 34
 „MATIX” Ltd. Żyzna 11 „L”, 42-202 Częstochowa
 NIP: 573-25-64-874, REGON: 152160295, KRS: 0000194457
 Tel.: +48 34 369 92 54, fax: +48 34 369 71 41, http://www.matix.net.pl, e-mail: sekretariat@matix.com.pl

MP-1 Universal Machine`s Separator Device

The MP-1 universal Machine`s Separator Device is designed to be used in dog headings horizontal and inclined longitudinal up to 14°.

In the presence of transverse slope of excavation to 12 degrees transport is acceptable with additional 2 side struts into special holders in the beam.



Technical data

Max. length of pull	80 m
Working stroke	1160 mm
Max. pull force (supply pressure 30 MPa)	365 kN
Working pull force (working pressure 25 MPa)	305 kN
Supply pressure	25 MPa
Operating liquid	3 ÷ 5 % oil-water emulsion
Max. pushing force (with supply pressure 30 MPa)	603 kN
Working pushing force (working pressure 25 MPa)	502 kN
Actuator working stroke	1250 mm

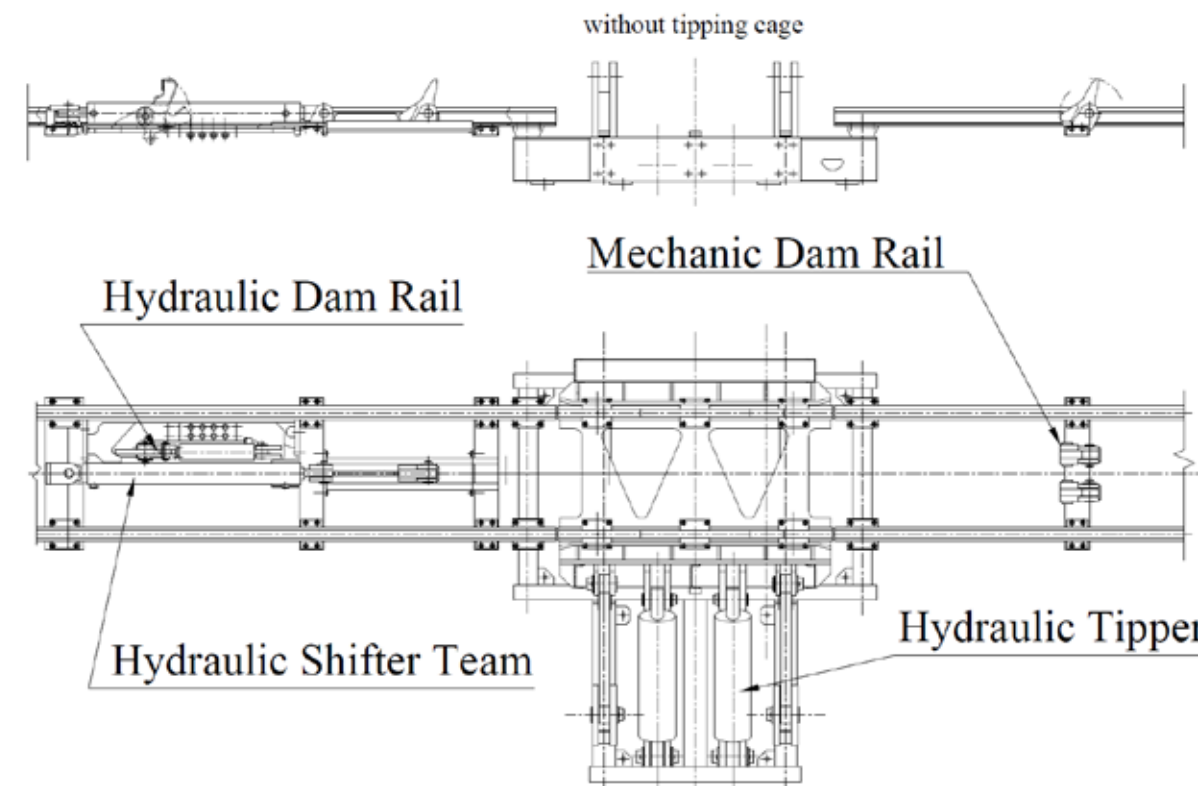
MTP S.A. ul. Kościuszki 12a, 34-350 Węgierska Górk
 Tel./ fax: +48 33 864 08 25, e-mail: biuro@mtpsa.pl
 Trade Branch: Bratnia 1, 43-200 Pszczyna, tel.: +48 32 210 12 34
 „MATIX” Ltd. Żyzna 11 „L”, 42-202 Częstochowa
 NIP: 573-25-64-874, REGON: 152160295, KRS: 0000194457
 Tel.: +48 34 369 92 54, fax: +48 34 369 71 41, http://www.matix.net.pl, e-mail: sekretariat@matix.com.pl

MP - UKP Bolting Machine

The MP-UKP bolting machine is used to move whole scraper conveyor. It can also move trave of wall scraper conveyor when you connect these two conveyors.

The MP-UKP bolting machine consists of the following subassemblies:

- bolting part,
- sliding carriage,
- pulling beams part,
- supporting part,
- resistance part,
- hydraulic components,
- connecting elements.



Technical specifications

• width	~ 2800 mm
• length	~ 2400 mm
• height	~ 2000 mm
• weight	approx. 3400 kg
• rotation angle	approx. 140°
• max. height during the rotation	~ 2670 mm
• max. height after the rotation	~ 2650 mm
• drive	2 hydraulic actuator PH-160
• supply pressure	max. 15 MPa
• working pressure	min. 10 MPa; max. 15 MPa
• strength of overturning	max. 2 x 300 kN
• strength of return	max. 2 x 42 kN
• actuator working stroke	600 mm
• actuator weight	approx. 185 kg
• track width	750 mm
• weight of the material in the mine truck	approx. 28 kN

Hydraulic Mine Trucks Tipper Teams

The Hydraulic Mine Trucks Tipper is designed for draining mine trucks with capacity up to 2800 dm³ in underground mines as well as on the surface and preparation branches.

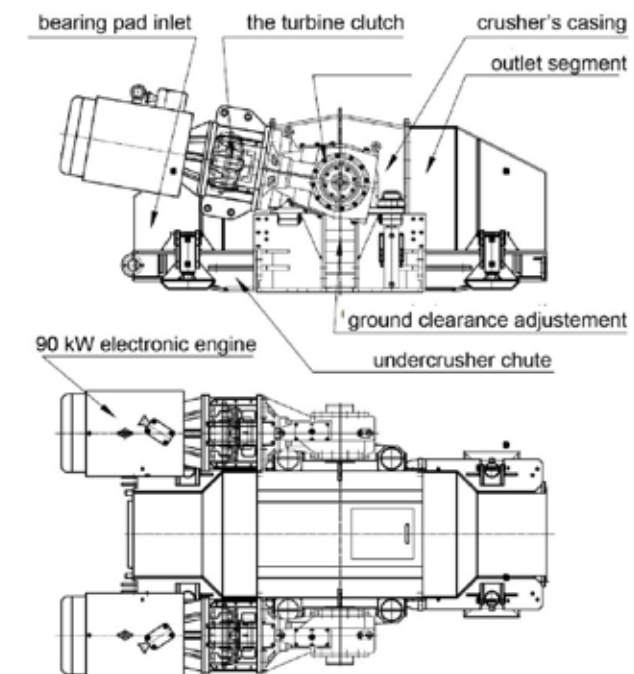
The tipper may be build wherever all loose material, such as sand, stone, cement are transported.

It can be used in underground coal mines, in non-methane and methane areas, in excavations with **a**, **b** or **c** degree of probability of methane outburst, as well as in excavations with **A** or **B** degree of probability of coal dust outburst.



Hydraulic Shifter Teams and Mine Trucks Tipper

MTP S.A. ul. Kościuszki 12a, 34-350 Węgierska Górka
 Tel./ fax: +48 33 864 08 25, e-mail: biuro@mtpsa.pl
 Trade Branch: Bratnia 1, 43-200 Pszczyna, tel.: +48 32 210 12 34
 „MATIX” Ltd. Żyzna 11 „L”, 42-202 Częstochowa
 NIP: 573-25-64-874, REGON: 152160295, KRS: 0000194457
 Tel.: +48 34 369 92 54, fax: +48 34 369 71 41, http://www.matix.net.pl, e-mail: sekretariat@matix.com.pl



MP - 90 dynamic crusher

TECHNICAL FEATURES

Shift:

- total stroke - up to 21 m
- piston rod-side force - 864 kN
- piston-side force - 306 kN
- supply pressure - 25 MPa

Spragging:

- piston rod-side force - 783 kN
- piston-side force - 77 kN
- supply pressure - 25 MPa

Power supply:

- from the hydraulic unit or fieldbus

Control:

- manual by separatory funnel lever

Medium:

- water-oil emulsion 0.5%

The PWH-UKP fastening device can be done in a different version with increased technical parameters according to customer requirements.

MTP S.A. ul. Kościuszki 12a, 34-350 Węgierska Górka
 Tel./ fax: +48 33 864 08 25, e-mail: biuro@mtpsa.pl
 Trade Branch: Bratnia 1, 43-200 Pszczyna, tel.: +48 32 210 12 34
 „MATIX” Ltd. Żyzna 11 „L”, 42-202 Częstochowa
 NIP: 573-25-64-874, REGON: 152160295, KRS: 0000194457
 Tel.: +48 34 369 92 54, fax: +48 34 369 71 41, http://www.matix.net.pl, e-mail: sekretariat@matix.com.pl

MP - UPM Repositioning Device

The MP-UPM repositioning device is designed as the final part of a conveyor belt cooperating with the sub-wall scraper conveyors. It enables movement of whole sub-wall scraper conveyor.

Described conveyor system allows the transport of excavated material from the exploited wall without a need for direct intervention in the configuration of a conveyor belt after each movement of the wall scraper conveyor in the direction of the wall.

The device of MP-UPM type consists of the following basic units:

- conveyor propulsion platform,
- linear part of the move device,
- gib,
- stub axle of the move device,
- hydraulic system,
- flip,
- transitional part,
- group of the locking mechanism,
- first part of the move device,
- part attached to the move device,
- expander system.



MTP S.A. ul. Kościuszki 12a, 34-350 Węgierska Górk
 Tel./ fax: +48 33 864 08 25, e-mail: biuro@mtpsa.pl
 Trade Branch: Bratnia 1, 43-200 Pszczyna, tel.: +48 32 210 12 34
 „MATIX” Ltd. Żyzna 11 „L”, 42-202 Częstochowa
 NIP: 573-25-64-874, REGON: 152160295, KRS: 0000194457
 Tel.: +48 34 369 92 54, fax: +48 34 369 71 41, http://www.matix.net.pl, e-mail: sekretariat@matix.com.pl

Hydraulic Shifter Teams and Track Dam

The Hydraulic Shifter Teams are designed for moving and locking mine trucks with capacity up to 2800 dm³ in underground mines as well as on the surface.

The teams may be also build where the mine trucks for loading of all loose materials are moved. It can be use to move and lock mine trucks with cooperation with Hydraulic Mine Trucks Tipper.

It can be used in underground coal mines, in non-methane and methane areas, in excavations with **a**, **b** or **c** degree of probability of methane outburst, as well as in excavations with **A** or **B** degree of probability of coal dust outburst.



Hydraulic Shifter Teams and Track Dam consist of:

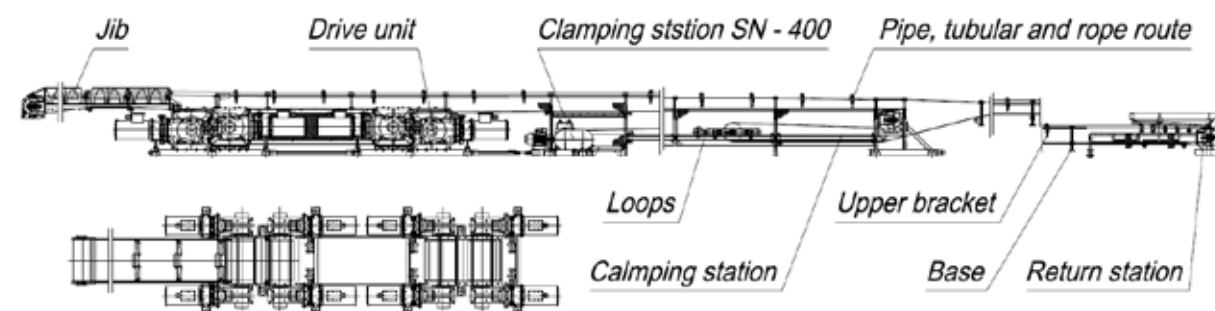
- Hydraulic shifter which is use to moving mine trucks.
- Hydraulic Track Dam that prevents the backflow of mine trucks moving by the Shifter
- Mechanic Track Dam which prevents backflow of mine trucks that have been moved.

MTP S.A. ul. Kościuszki 12a, 34-350 Węgierska Górk
 Tel./ fax: +48 33 864 08 25, e-mail: biuro@mtpsa.pl
 Trade Branch: Bratnia 1, 43-200 Pszczyna, tel.: +48 32 210 12 34
 „MATIX” Ltd. Żyzna 11 „L”, 42-202 Częstochowa
 NIP: 573-25-64-874, REGON: 152160295, KRS: 0000194457

Tel.: +48 34 369 92 54, fax: +48 34 369 71 41, http://www.matix.net.pl, e-mail: sekretariat@matix.com.pl

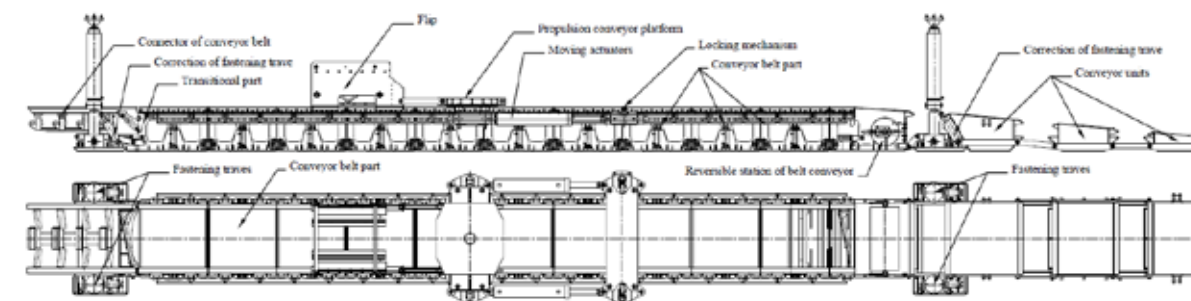
The PTM - 1000 and PTM - 1200 belt conveyors consist of the following basic units:

- Drive unit
- Jib
- Return station
- Loops
- Clamping station
- Route (channel section, tubular, rope)
- Electric equipment
- Accessories

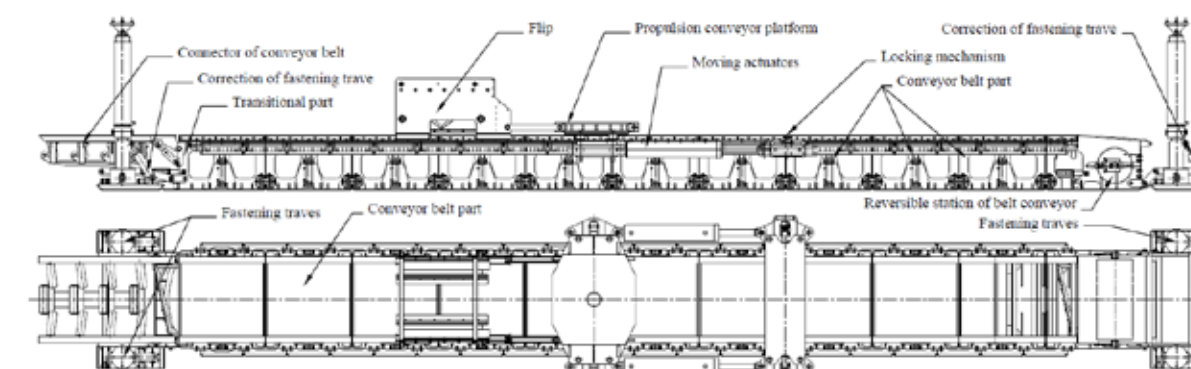


Technical data	
Properties	Values
Transportable material	Coal excavated material, mineral resources
Efficiency	According to the calculations
Consistency of transportable material- g [Mg/m ³]	from 0,85 to 1,5
Max. granulation[mm]	250 x 250 x 250
Angle of hutch [°]	30
Belt speed [m/s]	Up to 4
Conveyor length [m]	it depends of conditions
Power of main drive [kW]	max 4 x 132 = 528 kW
The acoustic pressure [dBA]	max 85
The angle of max. conveyor inclination [°]	from -14 ° to +16 °
Length of store belt [m]	Up to 120
Endurance of belt [kN/m]	min 1000
Max. tape extension at nominal load [%]	2
Tape sort	Flame retardant tape

MTP S.A. ul. Kościuszki 12a, 34-350 Węgierska Góra
 Tel./ fax: +48 33 864 08 25, e-mail: biuro@mtpsa.pl
 Trade Branch: Bratnia 1, 43-200 Pszczyna, tel.: +48 32 210 12 34
 „MATIX” Ltd. Żyzna 11 „L”, 42-202 Częstochowa
 NIP: 573-25-64-874, REGON: 152160295, KRS: 0000194457
 Tel.: +48 34 369 92 54, fax: +48 34 369 71 41, http://www.matix.net.pl, e-mail: sekretariat@matix.com.pl



Device that moves sub-wall scraper conveyors with a „flexible” bridge



Device that moves sub-wall scraper conveyors with a “stiff” bridge

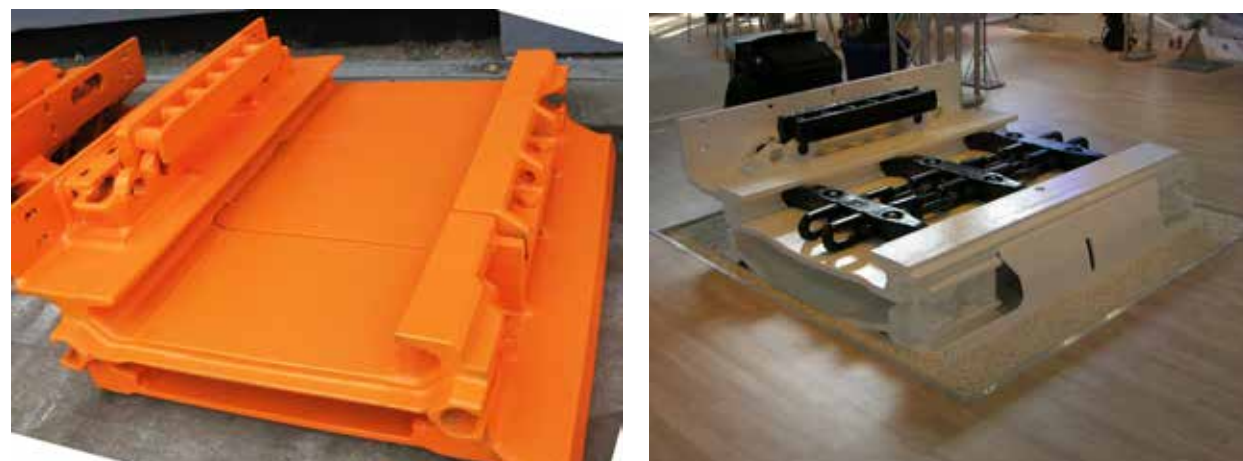
Technical data

Type	PHW-UPM
Tape width	from 800 to 1200 mm
Chute's width of the conveyor	Up to 1100 mm
Length	Approx. 20510mm – for 10 parts
Incrusion size	Up to 17 m
Number of parts	Up to 14 pieces
Acceptable longitudinal inclination	± 35°
Permissible transverse inclination	±10°
Supply pressure	25 - 30 MPa
Max. actuating force	Up to 3000 kN
Vertical expanding	2 telescopic traves in front of the first part and 2 telescopic traves behind a switch
Correction of vertical and lateral routes	changeable on every second segment

MTP S.A. ul. Kościuszki 12a, 34-350 Węgierska Góra
 Tel./ fax: +48 33 864 08 25, e-mail: biuro@mtpsa.pl
 Trade Branch: Bratnia 1, 43-200 Pszczyna, tel.: +48 32 210 12 34
 „MATIX” Ltd. Żyzna 11 „L”, 42-202 Częstochowa
 NIP: 573-25-64-874, REGON: 152160295, KRS: 0000194457
 Tel.: +48 34 369 92 54, fax: +48 34 369 71 41, http://www.matix.net.pl, e-mail: sekretariat@matix.com.pl

Wall Scraper Conveyors (PZS-MP-230, PZS-MP-260, PZS-MP-300)

The PZS-MP-230, PZS-MP-260, PZS-MP-300 wall scraper conveyors are used for putting away the winning from the wall and passing it on a sub-wall scraper conveyor. It is equipped with elements used for co-operating with every type of mechanized enclosure and wall combined cutter loader. It can work on walls which longitudinal inclination is up to 35°, lateral up to ±15° and day output is up to 12 000 tones.



Chutes of 300 and 200 profile with Eicotrack feed system



Complete hull of the PZS-MP-260 conveyor's return drive

MTP S.A. ul. Kościuszki 12a, 34-350 Węgierska Górka
 Tel./ fax: +48 33 864 08 25, e-mail: biuro@mtpsa.pl
 Trade Branch: Bratnia 1, 43-200 Pszczyna, tel.: +48 32 210 12 34
 „MATIX” Ltd. Żyzna 11 „L”, 42-202 Częstochowa
 NIP: 573-25-64-874, REGON: 152160295, KRS: 0000194457
 Tel.: +48 34 369 92 54, fax: +48 34 369 71 41, http://www.matix.net.pl, e-mail: sekretariat@matix.com.pl

PTM – 1000 & PTM – 1200 Belt Conveyors

The belt conveyor PTM 1000 and PTM 1200 are used to transport the winning in coal mines. The conveyor has a tight construction what allow to build it in excavations.

Because of the conveyor has abundant peak output can be used on a mine conveyor belt system - to transport the winning to the shaft.

The belt conveyor PPT-1000 and PTM-1200 can be used in a quarry, coal mines, ore mines etc.

The belt conveyer PPT-1000 and PTM-1200 can be used in coal mines in methane fields, in excavations to number „a”, „b” and „c” the danger of methane explosion and „A”, „B” the danger of coal's dust explosion.

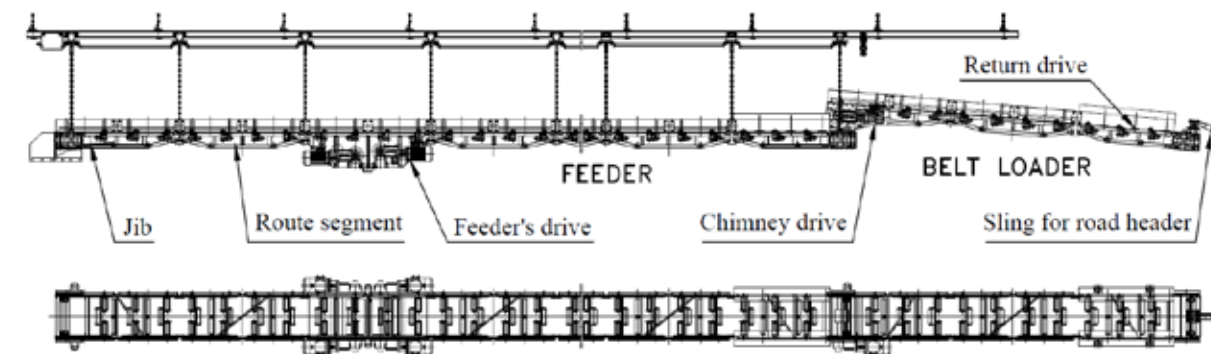


Drive with the jib

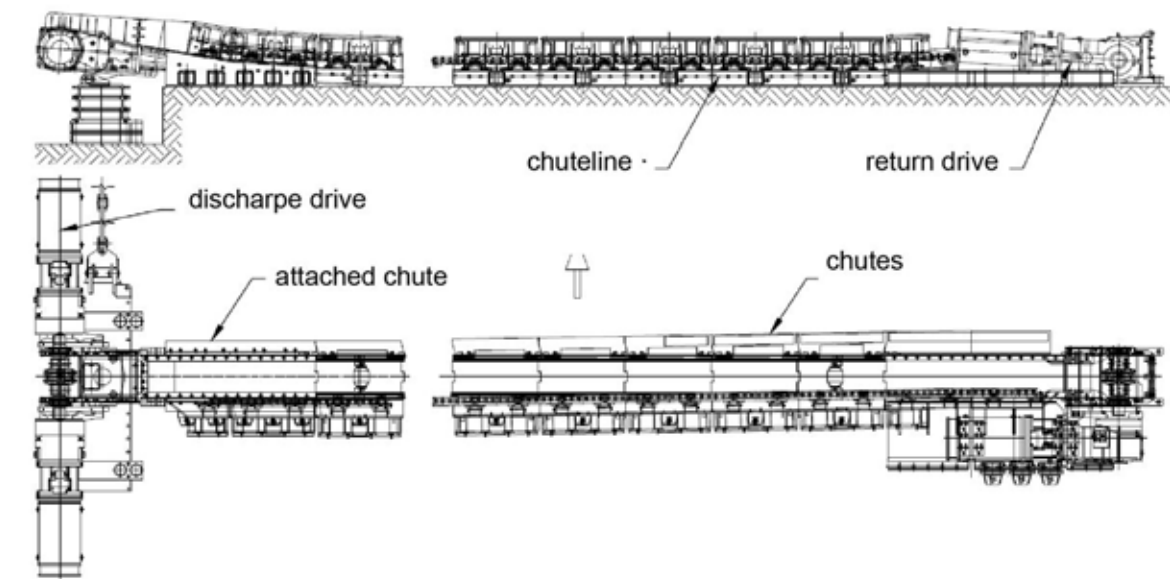


SN-400 clamping station

MTP S.A. ul. Kościuszki 12a, 34-350 Węgierska Górka
 Tel./ fax: +48 33 864 08 25, e-mail: biuro@mtpsa.pl
 Trade Branch: Bratnia 1, 43-200 Pszczyna, tel.: +48 32 210 12 34
 „MATIX” Ltd. Żyzna 11 „L”, 42-202 Częstochowa
 NIP: 573-25-64-874, REGON: 152160295, KRS: 0000194457
 Tel.: +48 34 369 92 54, fax: +48 34 369 71 41, http://www.matix.net.pl, e-mail: sekretariat@matix.com.pl



Technical data	
Properties	Values
Peak output	Up to 600 [Mg/h]
Number, type and size of feeder engine regulator	from 2 to 4 x AM 50 - 11/13, i = 13,2
Number, type and size of belt loader engine regulator	1 x AM 50 - 11/13, i = 13,2
Number and power of electric motors	from 2 to 4 x 55 [kW] + 1 x 55 [kW]
Length of belt loader/feeder route	Up to 100 [m] / 10 [m]
Belt speed	2,5 [m/s]
Tape width	800 [mm] or 1000 [mm]
Length of the route segment	3 [m]
Max. Flexion angle between route modules	± 6°
Max. angle of inclination of the machinery work	± 18°



PZS-MP-230 wall scraper conveyor with a frontal foundation

Technical data	
Properties	Values
Peak output	650 to 1100 [Mg/h]
Average output	550 to 950 [Mg/h]
Conveyor's length	Up to 300 [m]
Scraper chain grade C/ grade D	2x(26x92) or 2x(30x108) or 2x(34x126)
Reducers size	"15" or "25"
Scraper chain's speed	0,81 to 1,35 [m/s]
Longitudinal wall slope	Up to 35°
Lateral wall slope	Up to ±15°
Joints` resistance between parts of a chute	2500 or 3000 [kN]
Route chutes` length	1500 [mm]
Section break	1,5 [m]
Tolerable chute inflection angle:	
- in horizontal plane	±1.5°
- in vertical plane	±3°

The drive units can be equipped with single-speed or two-speed motors. Under the assumed (according to PN-G-50004) safety factor $m > 1.5$, depending on the size and strength of the scraper chain and its speed depends on the gear reducer and chain pitch diameter of the drum, the total power installed in the conveyor has a certain limit values. Using a spacer plate between the side of the hull of the drive, and the regulator, there is the possibility of building each approved type reducer any manufacturer's about the size "15" and "25".

PZP-MP-230 & PZP-MP-260 Face Scraper Conveyors

The PZP-MP-230 and the PZP-MP-260 face scraper conveyors are used for putting away the winning from walls exploiting hard coal and giving it on a coaxially placed belt conveyor. It is made in version which route width is 750 or 864 mm.

These conveyors can work with the MP-UKP Fastening Device or with the MP-UPM Repositioning Device that provide expanding of drive and re-routing station of the face scraper conveyor and re-routing station of the belt conveyor installed in the supporting foundation of the overall power input.

The construction also allows cyclic reconstruction of the face scraper conveyor connected with shortening of the belt conveyor. Construction solutions allow concurrent reconstruction of the face scraper conveyor and maneuverable conveyor belt. It also allows reduction of workers and significantly improve safety at work.

The PZP-MP-230 and the PZP-MP-260 face scraper conveyors are suitable for installation in their dynamic crushers and they can work with many types of belt conveyors with belt width 1000 or 1200 mm.



MTP S.A. ul. Kościuszki 12a, 34-350 Węgierska Górka
Tel./ fax: +48 33 864 08 25, e-mail: biuro@mtpsa.pl
Trade Branch: Bratnia 1, 43-200 Pszczyna, tel.: +48 32 210 12 34
„MATIX” Ltd. Żyzna 11 „L”, 42-202 Częstochowa
NIP: 573-25-64-874, REGON: 152160295, KRS: 0000194457
Tel.: +48 34 369 92 54, fax: +48 34 369 71 41, <http://www.matix.net.pl>, e-mail: sekretariat@matix.com.pl

PTU 800/1000 Belt Feeders

The PTU 800/1000 belt feeders are used for haulage of the excavated material where winning machine works, moving it on the other belt conveyor, scraper conveyor or minetruck.

There is a possibility to suspend device to the ceiling excavation by the approving and positioning on the floor.

The route is adopted to suspend additional equipment, for example precipitator over the route or set of elements for suspending electrical equipment behind feeder's route.

Permissible slope excavation in which workers may work is up to $\pm 18^\circ$ and corresponds to the scope of work heading machines.

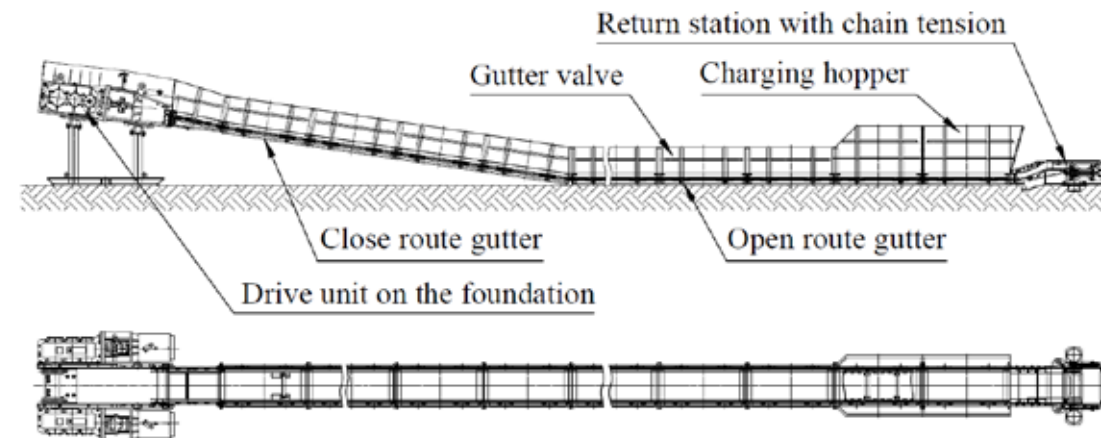
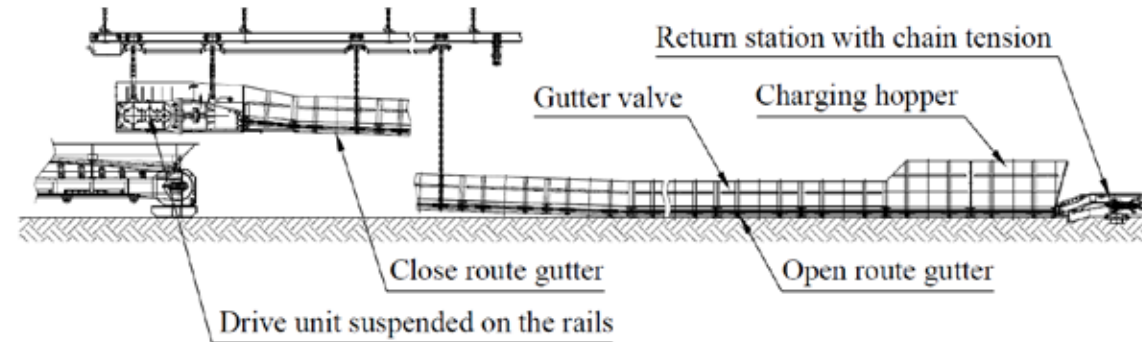
It can be used in underground coal mines, in non-methane and methane areas, in excavations with **a**, **b** or **c** degree of probability of methane outburst, as well as in excavations with **A** or **B** degree of probability of coal dust outburst.

Belt feeders PTU 800/1000 consists of two main components: the feeder and belt loader. The feeder and the loader consist of:

- drive,
- jib,
- return drive,
- chimney drive,
- segments of the route,
- suspension elements of the feeder and the belt loader.

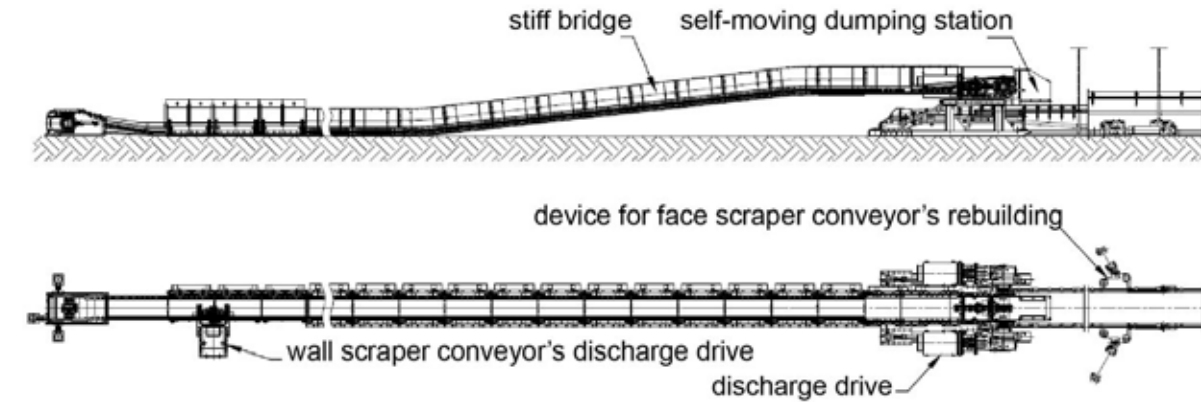
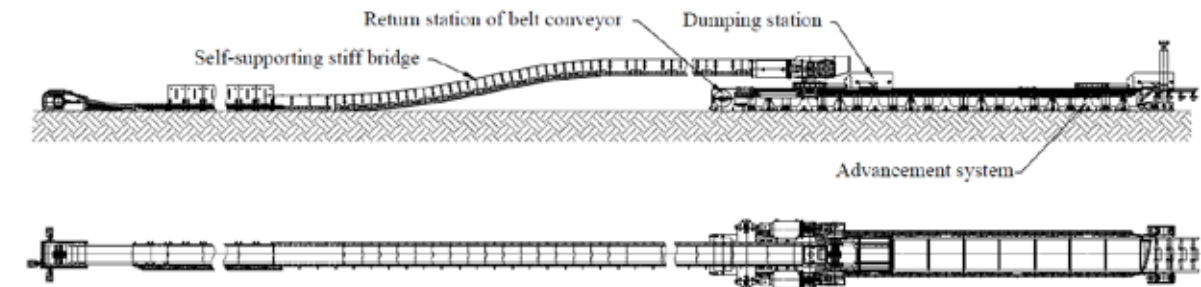


MTP S.A. ul. Kościuszki 12a, 34-350 Węgierska Górka
Tel./ fax: +48 33 864 08 25, e-mail: biuro@mtpsa.pl
Trade Branch: Bratnia 1, 43-200 Pszczyna, tel.: +48 32 210 12 34
„MATIX” Ltd. Żyzna 11 „L”, 42-202 Częstochowa
NIP: 573-25-64-874, REGON: 152160295, KRS: 0000194457
Tel.: +48 34 369 92 54, fax: +48 34 369 71 41, <http://www.matix.net.pl>, e-mail: sekretariat@matix.com.pl

Drive unit on PZO-620/742/E haulage scraper conveyor's foundation

Haulage scraper conveyor PZO-620/742/E with drive on the foundation

PZO-620/742/E haulage scraper conveyor with suspended drive

Technical data	
Properties	Values
Peak output	Up to 800 [Mg/h]
Reducer size	2 x MP-40/55, i = 30
Number and power of engine	2 x 55 [kW]
Lenght	do 150 [m]
Speed of chain scraper	0,86 [m/s]
Conveyor's chain	2 x 18 x 64 grade C
Chute's profile	E190 [mm]
Chute's width	Od 620 up to 742 [mm]
Chute's lenght	1500 [mm]
Longitudinal wall slope	± 18°
Tolerable chute inflection angle:	
- in a horizontal plane	±1.5°
- in a vertical plane	±3°

MTP S.A. ul. Kościuszki 12a, 34-350 Węgierska Górk
 Tel./ fax: +48 33 864 08 25, e-mail: biuro@mtpsa.pl
 Trade Branch: Bratnia 1, 43-200 Pszczyna, tel.: +48 32 210 12 34
 „MATIX” Ltd. Żyzna 11 „L”, 42-202 Częstochowa
 NIP: 573-25-64-874, REGON: 152160295, KRS: 0000194457
 Tel.: +48 34 369 92 54, fax: +48 34 369 71 41, http://www.matix.net.pl, e-mail: sekretariat@matix.com.pl

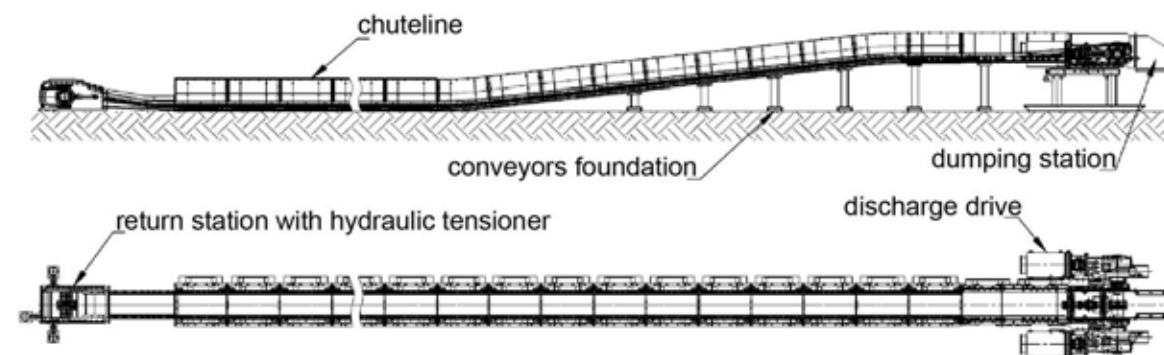

PZP-MP-230 (PZP-MP-260) face scraper conveyor with MP-UKP fastening device

PZP-MP-230 (PZP-MP-260) face scraper conveyor with MP-UKP repositioning device

Technical data		
Properties	Values	
	PZP-MP-230	PZP-MP-260
Peak output [Mg/h]	Up to 1000	Up to 1300
Lenght [m]	Up to 60	
Motor power [kW]	1 or 2x90 (160)	1 or 2x160 (200)
Chain speed [m/s]	Up to 1,50	
Conveyor's chain grade	2 x (26 x 92) kl.C or 2 x (30x108) kl.C	
Side profile	E230	E260
Chute's width [mm]	750	864
Authorized slope		
- Longitudinal wall slope	12°	
- Lateral wall slope	8°	

MTP S.A. ul. Kościuszki 12a, 34-350 Węgierska Górk
 Tel./ fax: +48 33 864 08 25, e-mail: biuro@mtpsa.pl
 Trade Branch: Bratnia 1, 43-200 Pszczyna, tel.: +48 32 210 12 34
 „MATIX” Ltd. Żyzna 11 „L”, 42-202 Częstochowa
 NIP: 573-25-64-874, REGON: 152160295, KRS: 0000194457
 Tel.: +48 34 369 92 54, fax: +48 34 369 71 41, http://www.matix.net.pl, e-mail: sekretariat@matix.com.pl

The PZP-MP-230 and the PZP-MP-260 scraper conveyors can be also used as walled off in haulage excavations as haulage conveyors (stationary). During the haulage they can take the feed from the wall scraper conveyor, scraper belt conveyor or from the container and pass it to a following scraper conveyor or belt conveyor, or to mining cars or winning containers. Conveyor that takes back the winning can be located coaxially or angled to the PZP-MP-230 and the PZP-MP-260 conveyors. This kind of conveyors can be built in excavations of longitudinal slope from -35° to $+25^{\circ}$ and lateral slope up to $\pm 10^{\circ}$. Drivers' power and chuteline's high resistance allows to build in conveyors which are up to 300 meters long.

Drives and conveyor route are protected from running off with fastening devices.



PZP-MP-230 (PZP-MP-260) scraper conveyors working as a haulage conveyor

Technical data		
Properties	Values	
	PZP-MP-230	PZP-MP-260
Peak output [Mg/h]	Up to 1800	Up to 2500
Length [m]	Up to 300	
Motor power [kW]	1 x 160 i 1 x 200	4 x (from 90 to 315)
Conveyor's chain grade C / grade D	2x(30x108)	2x(30x108) or 2x(34x126)
Reducer dimensions	„15” or „25”	„25”
Chain speed [m/s]	0,95 to 1,13	
Longitudinal wall slope	from -35° to $+25^{\circ}$	
Lateral wall slope	Up to $\pm 10^{\circ}$	
Strength of joints [kN]	2500 or 3000	
Side profile height [mm]	230	260
Route chutes' length [mm]	1500	
Tolerable chute inflection angle		
in horizontal plane	± 1.5	
in vertical plane	± 3	

PZO-620/742/E Haulage Scraper Conveyor

The PZO-620/742/E universal scraper conveyor is used for putting away excavated material from walls exploiting hard coal – horizontal or sloped up to $\pm 18^{\circ}$ and transversely min. $\pm 8^{\circ}$. It can be used in underground coal mines, in non-methane and methane areas, in excavations with **a**, **b** or **c** degree of probability of methane outburst, as well as in excavations with **A** or **B** degree of probability of coal dust outburst.

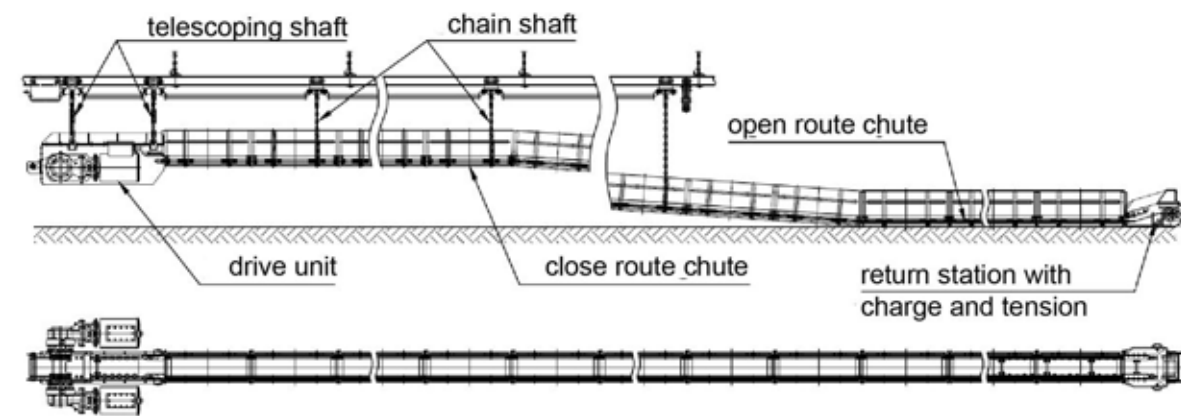
Depending on the needs of the PZO-620/742/E conveyor can be completely set directly on the floor or partially set on the floor with imbedded on the foundation or suspended drive or completely suspended above the conveyor belt or cars.

Configuration of the conveyor with the drive at the construction site or suspended is: switch and couple chutes arranged on the floor, rest part with the drive is suspended under the outfeeding conveyor or cars. The way of move of the conveyor over the floor depends on the user.

The PZO-620/742/E conveyor consists of the following components:

- a drive unit equipped with two engines of 55 kW, two MP-40/55 gear units and flexible couplings,
- return station with the charge or separate charging hopper,
- foundation or suspension drive,
- a chuteline made of E 190 chute, with a width of 620 to 742 mm and a length of 1500 mm with a wear-resistant chute of a thickness of 20 mm,
- a route of the conveyor made of chain scraper 18 x 64 connected with scrapers with clamps, bolts and nuts,
- suspension elements of the conveyor.





PZU 440/E180WM universal scraper conveyor, partly suspended, version with 2x30 kW unit drive and AP-400-22/30 gearbox

Technical data	
Properties	Values
Peak output	Up to 150 [Mg/h]
Reducer size	2 x AP-400-22/30, i = 31,66
Number and power of engine	2 x 30 [kW]
Lenght	Up to 120 [m]
Speed of chain scraper	0,80 [m/s]
Conveyor's chain	2 x 18 x 64 grade C
Chute's profile	E180 [mm]
Chutes' width	440 [mm]
Chutes' lenght	1500 [mm]
Longitudinal wall slope	± 18°
Tolerable chute inflection angle:	
- in horizontal plane	±1.5°
- in vertical plane	±3°



Return station with adjustable chain tension



Discharge drive

PZU-440/E180WM Universal Scraper Conveyor

The PZU-440/E180WM universal scraper conveyor is used for putting away excavated material from walls exploiting hard coal – horizontal or sloped up to $\pm 18^\circ$. It may be used in underground coal mines, in non-methane and methane areas, in excavations with **a**, **b** or **c** degree of probability of methane outburst, as well as in excavations with **A** or **B** degree of probability of coal dust outburst.

Depending on the needs of the PZU-440/E180WM conveyor can be completely set directly on the floor or partially set on the floor with imbedded on the foundation or suspended drive or completely suspended above the conveyor belt or cars.

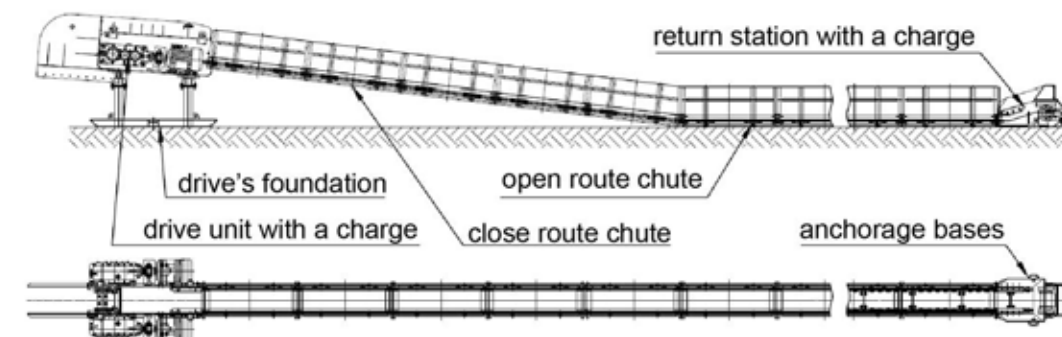
Configuration of the conveyor with the drive at the construction site or suspended is: switch and couple chutes arranged on the floor, rest part with the drive is suspended under the outfeeding conveyor or cars. The way of move of the conveyor over the floor depends on the user.

The PZU-440/E180WM conveyor consists of the following components:

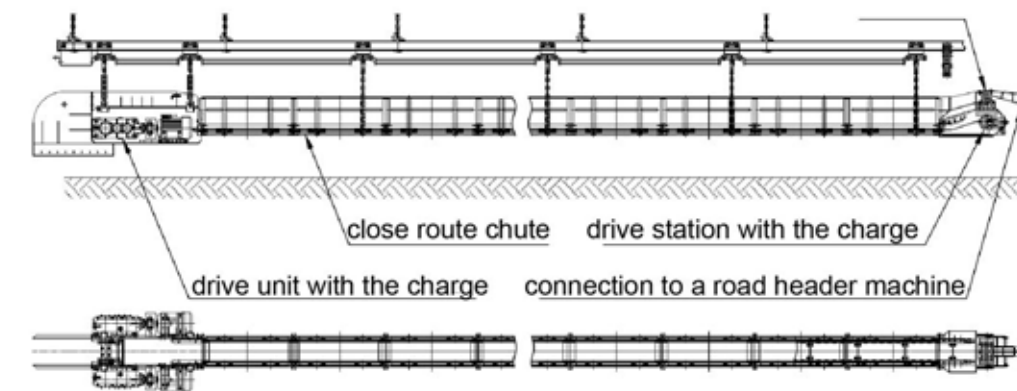
- a drive unit equipped with two engines of 22 kW or 30 kW, two PPL-14/22 or AP-400-22/30 gear units and flexible couplings,
- return station with the charge,
- foundation or suspension drive,
- chuteline made of chutes of E 180 profile type of which are 440 mm wide and 1500 mm long with 10 mm thick wear-resistant chute,
- the route of the conveyor made of chain scraper 18 x 64 connected with scrapers with clamps, bolts and nuts,
- suspension elements of the conveyor.



MTP S.A. ul. Kościuszki 12a, 34-350 Węgierska Górka
 Tel./ fax: +48 33 864 08 25, e-mail: biuro@mtpsa.pl
 Trade Branch: Bratnia 1, 43-200 Pszczyna, tel.: +48 32 210 12 34
 „MATIX” Ltd. Żyzna 11 „L”, 42-202 Częstochowa
 NIP: 573-25-64-874, REGON: 152160295, KRS: 0000194457
 Tel.: +48 34 369 92 54, fax: +48 34 369 71 41, http://www.matix.net.pl, e-mail: sekretariat@matix.com.pl



PZU 440/E180WM universal scraper conveyor built on a floor in the version 2x22 kW of the drive and gearbox PPL-14/22 on the foundation



PZU 440/E180WM universal scraper conveyor completely suspended with PPL-14/22 gears adapted to cooperate with a road header machines

Technical data	
Properties	Values
Peak output	Up to 120 [Mg/h]
Reducer size	2 x PPL-14/22, i = 29,65
Number and power of engine	2 x 22 [kW]
Lenght	Up to 100 [m]
Speed of chain scraper	0,86 [m/s]
Conveyor's chain	2 x 18 x 64 grade C
Chute's profile	E180 [mm]
Chutes' width	440 [mm]
Chutes' lenght	1500 [mm]
Longitudinal wall slope	$\pm 18^\circ$
Tolerable chute inflection angle:	
- in horizontal plane	$\pm 1.5^\circ$
- in vertical plane	$\pm 3^\circ$

MTP S.A. ul. Kościuszki 12a, 34-350 Węgierska Górka
 Tel./ fax: +48 33 864 08 25, e-mail: biuro@mtpsa.pl
 Trade Branch: Bratnia 1, 43-200 Pszczyna, tel.: +48 32 210 12 34
 „MATIX” Ltd. Żyzna 11 „L”, 42-202 Częstochowa
 NIP: 573-25-64-874, REGON: 152160295, KRS: 0000194457
 Tel.: +48 34 369 92 54, fax: +48 34 369 71 41, http://www.matix.net.pl, e-mail: sekretariat@matix.com.pl